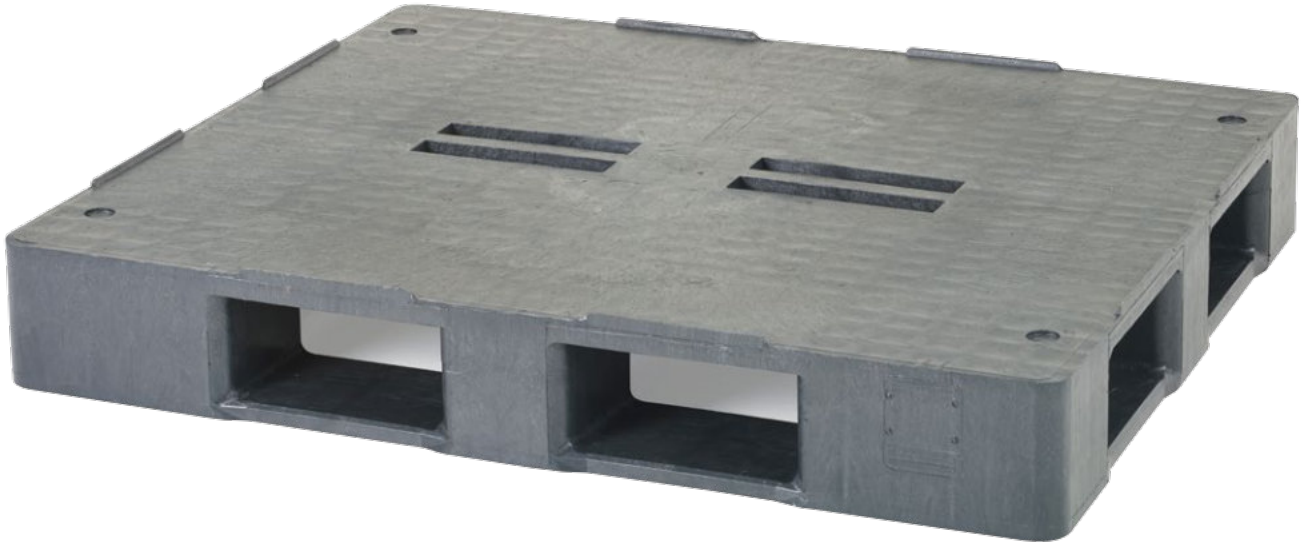


Endur i9.1

48 x 40



Extremely stable plastic pallet for loads up to 4400lbs (2000kg) in the high rack
 The Endur i9.1 is an excellent solution for heavyloads. Its robust design makes the pallet resistant to impact and able to carry loads of up to 4400lbs (2000kg) in high-bay racks and during transport, as well as up to 17600lbs (8000kg) in static storage. This high-performance pallet is also ideal for transporting and storing big bags.

Bottom support



> 9 feet (9F) on request

> 3 runners (3R) on request

> runners (5R)

Deck options



> open deck (OD)

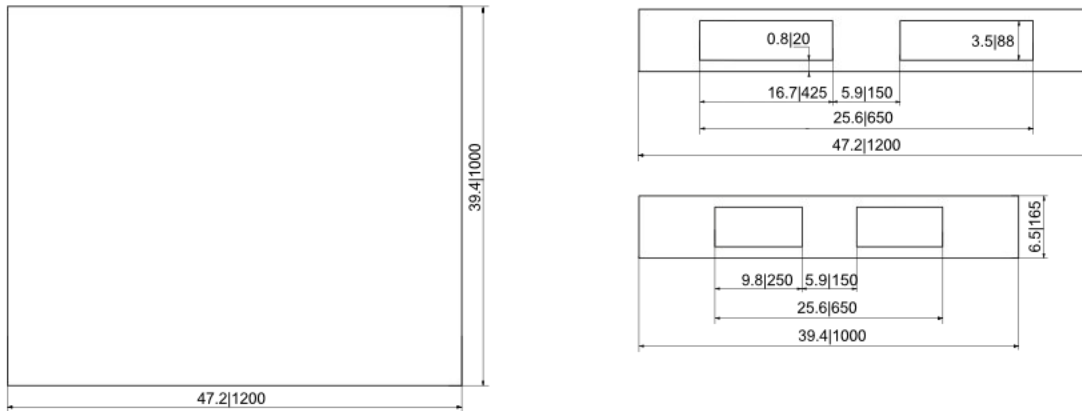


Rounded edges protect the pallet from damage.

Technical data*1

	Previous name	Bottom support	Top deck	Dimensions [in] / [mm]	Load capacities*2 [lbs] / [kg]			Weight [lbs] / [kg]	
					Static	Dynamic	Racking	HDPE	ACM
Endur i9.1 (OD-9F)	—	9 feet	open	47.2 x 39.4 x 6.5 1200 x 1000 x 165	17600 8000	8800 4000	—	59.5	27.0
Endur i9.1 (OD-3R)		3 runners					4400 2000	60.5	27.5
Endur i9.1 (OD-5R)		5 runners					61.5	28.0	

Entry: 4 ways | Nesting height: — | Safetyrim: 0.4 in / 9 mm



nominal sizes in inch | mm

Options

- Color: (other colors on request³) > Individual marking³
- Anti-slip: safety rim, grommets on deck, under deck and under skids
- ESD prevention: —



*1 Figures can vary depending on the raw material used and options applied. *2 Guideline values are based both on experience and parts of test ISO 8611, which tests with evenly distributed loads at room temperature (68°F / 20°C). Varying data may result from different conditions of usage. Your specific requirements can be identified upon request. *3 Minimum quantity required ACM pallets should only be used and stored in a dry environment. We reserve the right to change any of the stated information without prior notice.