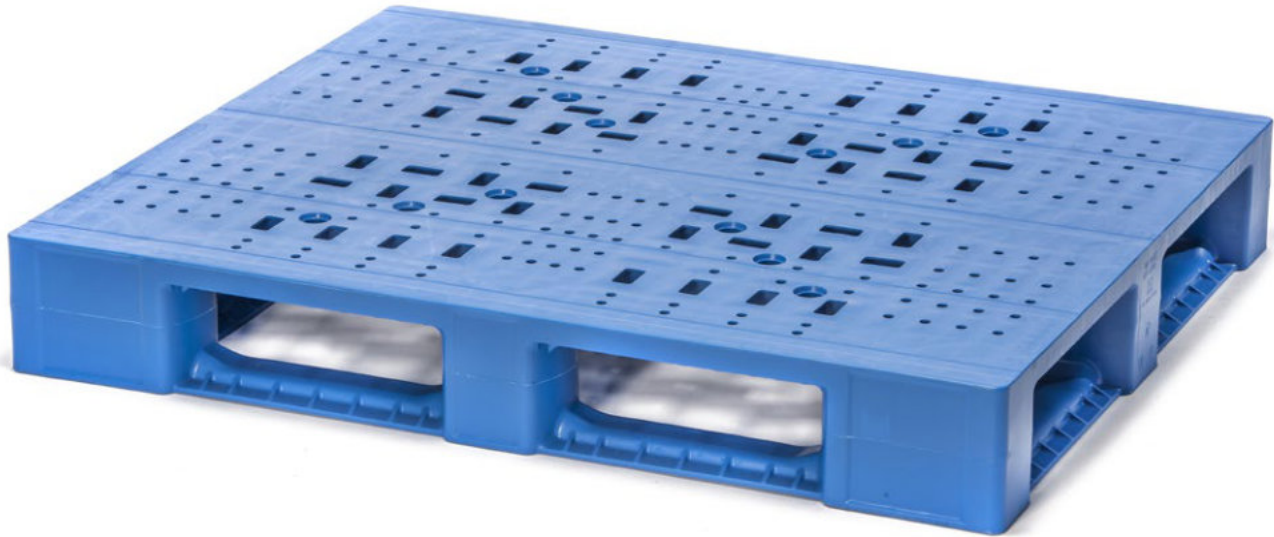


Endur i9

48 x 40



Strong plastic pallet for big bags and heavyloads up to 3300lbs (1500kg) in the high rack. Made of impact-resistant PP – no metal reinforcements – this pallet is ideal for semi-hygienic applications and for high-rotation usage such as open or closed pools. The pallet is made using gas-assist technology, meaning that internal gas channels are used to make the pallet extra strong. This benefit is especially useful when the pallet is used in racks. The best solution for heavyloads and big-bags.

Bottom support



> 5 runners (5R)

Deck options



> open deck (OD)



Standard: anti-slip rubber inserts in upper and lower deck



In option available: anti-slip strips



Rounded borders reduces the risk of fork access damage.

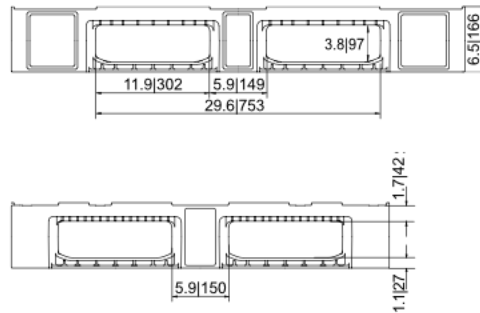
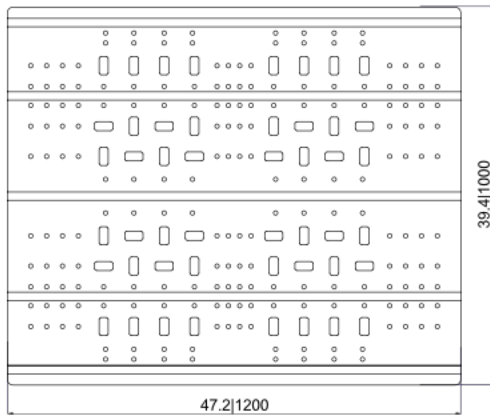


The excellent design guarantees a long life span.

Technical data*1

	Previous name	Bottom support	Top deck	Dimensions [in] / [mm]	Load capacities*2 [lbs] / [kg]			Weight [lbs] / [kg]	
					Static	Dynamic	Racking	HDPE	ACM
Endur i9 (OD-5R)	—	5 runners	open	47.2 x 39.4 x 6.5 1200 x 1000 x 165	13200 6000	6600 3000	3300 1500	57.5 26.0	—

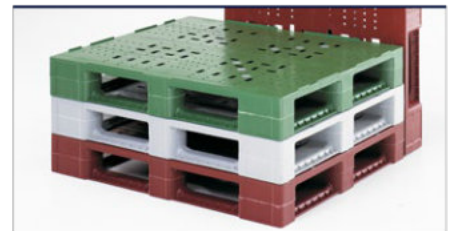
Entry: 4 ways | Nesting height: — | Safetyrim: 0.3 in / 7 mm



nominal sizes in inch | mm

Options

- Color: (other colors on request³) > Individual marking³
- Anti-slip: safety rim, strips on deck, grommets on deck, grommets under deck > RFID transponders
- ESD prevention: anti-static > Fire retardant



*1 Figures can vary depending on the raw material used and options applied. *2 Guideline values are based both on experience and parts of test ISO 8611, which tests with evenly distributed loads at room temperature (68°F / 20°C). Varying data may result from different conditions of usage. Your specific requirements can be identified upon request. *3 Minimum quantity required ACM pallets should only be used and stored in a dry environment. We reserve the right to change any of the stated information without prior notice.