

Healthcare Storage Solutions

Volume 3

Organize Supplies • Reduce Inventory • Maximize Space





Benefits of Kanban for Healthcare:

- Organization of supplies.
- Stock is rotated to reduce expired supplies.
- Reduces time to find supplies.
- Gives time back to clinical staff for care of patients.
- Reduce unnecessary inventory holding.
- Major cost and time savings.

How Kanban Works

Kanban is a highly effective method of managing inventory through the use of visual cues to alert when items need to be restocked. A Kanban system can be implemented using a two-bin system, a single-bin system, a side-by-side system, Kanban cards or indicator flags.

Two-Bin Kanban System

The most popular type of Kanban system uses two bins filled with the same item. The bins are placed on a shelf one in front of the other. When the front bin is empty, the nurse removes it and places it on the top shelf to show that the bin needs to be refilled. The rear bin is pulled to the front for picking. Once the empty bin is refilled, it is put behind the front bin so stock is rotated and items don't expire.



Shelf Bins, see pages 8-14

Single-Bin Kanban System

A single two-sided bin with one end being a brightly coloured stock "indicator" is used to hold supplies. A divider marks the minimum stock holding level. Once the primary stock is empty, the bin is turned around to reveal the brightly coloured indicator side of the bin. This is a visual cue that the bin needs to be refilled.



Indicator® Bins, see page 14

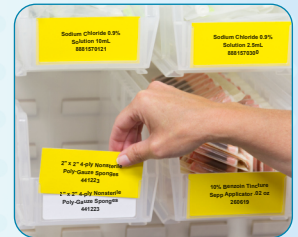


What is Kanban?

Kanban is Japanese for "signboard" or "billboard" and is a system for scheduling the movement of inventory through the use of visual indicators. Identifying when a supply container is empty and needs to be refilled is a crucial component of any inventory management system.

Kanban Cards

Kanban cards are placed on storage bins with detailed information about what's in the bin (part number, bar code, etc.). Once the items in the bin reach a minimum stock level, the card is removed and deposited in a location to notify the materials manager to reorder that item.



Use duplicate cards, in two different colours.



Benefits of 5S for Healthcare:

- Eliminate waste and redundancies.
- Create extra workspace.
- Tighten inventory levels.
- Reduce inventory cost.
- Find supplies quickly using a standardized colour-coded sorting system.

Convert your workplace to 5S Lean with innovative products from Ak-West Inc.

Organizations that invest in a 5S process gain productivity, create a higher quality product and lower operating costs by simply implementing a system of waste removal, visual identification and efficient use of space.

What is 5S Lean?

5S Lean is a methodology to improve efficiencies and enhance operational excellence. These proven steps include:

1. Sort
2. Set In Order
3. Shine
4. Standardize
5. Sustain



Before



After

5S Lean Solutions

Sort | Set in Order | Shine | Standardize | Sustain

5S Lean Healthcare Solutions:

Increase Efficiency and Organization with 5S Lean!

A well-organized supply room is critical in medical, pharmacy or laboratory settings. Extra time spent by physicians, ancillary staff, and nursing staff searching for supplies can affect the quality of care being given to your patients.

By incorporating industry-leading products, you can easily:

- Improve work flow and productivity.
- Reduce PAR levels.
- Develop a cleaner, more efficient environment.
- Create extra workspace.
- Increase safety.
- Reduce wasted time and effort.
- Boost employee morale.
- Ensure improvements remain intact.



Sort:

Sort it out! The first step is to organize the work areas, leaving only those tools and materials necessary to perform daily activities.

- Use storage bins to sort and separate like parts in small or large work spaces.
- Bins feature large hopper front for easy access and faster picking.
- Ak-West Inc. bins are available in multiple sizes and colours for total visualization.
- Clear bins provide maximum visibility and easy identification of supplies.
- Shelf bins and totes will fit on new or existing shelving systems.



Set in Order:

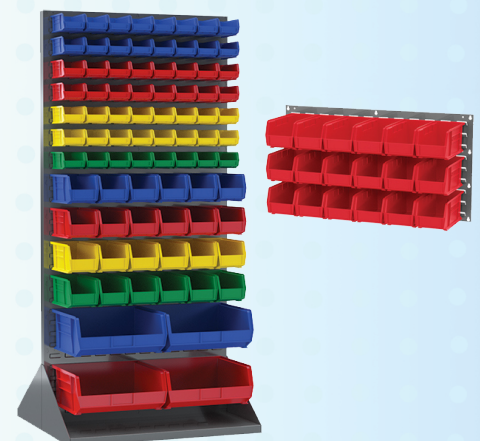
Frequently used work station materials and tools should be arranged so that all needed items are easy to get to and accessible for anyone to find.

Organize:

- Work areas should be organized in a way that makes the most efficient use of shelving, racks, counter areas and floor space, keeping frequently used items within reach.
- Hanging and stacking bins, shelf bins and totes let you store items used together close to each other.
- Orderliness eliminates waste in production and clerical activities.
- Label both the bin and its space on the shelf to ensure parts are always returned to the proper location.

Create Space:

- Louvered hanging systems create vertical storage and help to make the most of an area.
- Wire and steel shelving systems create customized storage to fit any workspace.
- Mobile systems are versatile that keep items organized and within reach at all times.



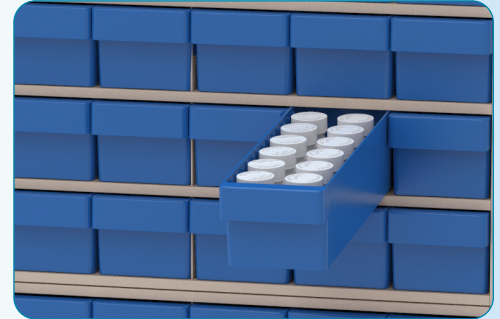
5S Lean Solutions

Sort | Set in Order | Shine | Standardize | Sustain

Shine:

Prevent dirt from accumulating and develop a cleaning maintenance schedule to help protect parts and equipment from dirt, dust, and debris.

- Store materials securely with lids to keep items clean and protected.
- Grid containers have divider options to customize individual compartments for parts, plus optional lids to keep out dust and debris.
- Many Ak-West Inc. plastic products are resistant to oils, chemicals, and weak acids.
- Drawer bins with enclosed shelving systems help keep supplies, parts, and tools secure and dust free.
- Easy to clean nest and stack containers, attached lid and detached lid containers nest when empty for efficient organization and storage.



Standardize:

Benchmarking and evaluation tactics should be utilized to maintain a consistent approach for carrying out tasks and procedures.

Work Flow:

- Never run out of inventory by implementing a Kanban system.
- Indicator two-tone bins simplify visual recognition when supplies need to be replenished - never run out again!
- Super-sized bins securely stack on top each other, ensuring items stay in their proper places.
- Portable work centers allow for easy mobility and integration of 5S duties into regular work responsibilities.



Stock | Pick | Flip | Replenish

Consistency:

- By standardizing operation work stations, non-value-added tasks are removed or corrected, which reduces downtime and increases output and efficiency.
- Bins, carts, and hoppers help create universal standards for each process such as colour coding, labeling and uniform sizes.



Sustain:

A disciplined and committed work flow process empowers workers to improve and maintain the workplace. When employees take pride in their work, it leads to greater job satisfaction and higher productivity.

Continue:

- Reinforcing and evaluating best practices will keep waste out of the process and provide a solid foundation from which to build improvements in the future.
- Our plastic and steel material handling products promote effective storage, organization, and transport systems to boost efficiency and reduce costs in any work environment.



Index

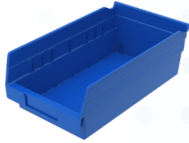
Hanging and Stacking Bins - Page 6

- The industry-leading hanging and stacking bin.
- Bins stack, sit on shelving, and hang.
- Guaranteed not to crack or break under normal load conditions.



4" Shelf Bins - Page 7

- Bins work with 12", 18" and 24" deep storage.
- Industrial-grade bins outlast corrugated bins.
- Built-in rear hang lock allows bins to tilt out for complete access.



6" Shelf Bins - Page 8

- 6" tall bins allow more storage space than traditional 4" Bins.
- Reinforced ribs for added strength.
- Bins work with 12", 18" and 24" deep storage.



Stack and Store Bins - Page 9

- Wide hopper front for easy access.
- Same size bins can be stacked on top one another on flooring or shelving.
- Stacking bins are ideal for large, bulky items.



1800 Series Bins - Page 10

- Storage system for heavy, bulky items.
- Stackable with reinforcing ribs to prevent spreading under heavy loads.
- Front and back finger grips for easy handling.



High Visibility Shelf Bins - Page 10

- Large hoppers front for maximum visibility of contents.
- Works with standard steel and wire shelving or gravity flow racks.



Super Sized Bins - Page 11

- Perfect for organizing and protecting large or bulky items.
- Heavy-duty bins stack securely on top of each other or sit on shelving.



Drawer Bins - Page 12

- Keep supplies and parts secure and dust-free.
- Drawers can be used with Cabinets, Shelving, and more.



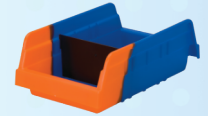
System Bins - Page 12

- Designed to fit on a 36" wide steel or wire shelving, cabinets and drawers.
- Sturdy interior double-wall construction.
- Smooth surfaces are easy to handle and clean.



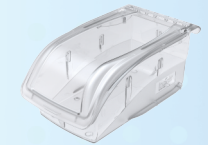
Indicator Bins - Page 13

- Two-tone Kanban bins offer inventory control at a glance.
- Bright colour triggers low stock levels.
- Bin can be picked from both sides.



InSight Bins - Page 14

- Ultra-clear polycarbonate bins provide easy visibility of contents.
- Bins securely stack and hang from louvered panels and rails.



Tilt View Bins - Page 15

- Cabinets and cups made of durable polystyrene.
- Stone colour is ideal for a variety of medical settings.



Tote Caddy - Page 16

- Compact, hand-held supply caddy.
- Designed to hold loose items, medical and cleaning supplies or tools for easy transport.
- The perfect phlebotomy caddy!



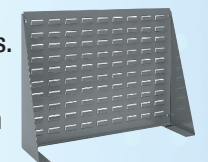
Supply Box - Page 16

- Removable tray keeps smaller items quickly accessible.
- Oversized padlock eye accepts a variety of padlocks or zip ties in order to make the box tamper-evident.



Louvered Panels - Page 17

- Customizable vertical storage for hanging bins.
- Available in panels and racks.
- Compatible with a large variety of hanging bin sizes.



Rail Racks - Page 18

- Steel rail racks securely support Hanging and Stacking Bins, InSight® Bins, or Steel Cabinets (sold separately).
- Heavy-duty steel for strength and durability.



Index

19 Series Cabinets - Page 19

- Great for organizing small items such as dental instruments or lab supplies.
- Keep inventory accurate and dust free.
- Clear windows provide visibility of contents.



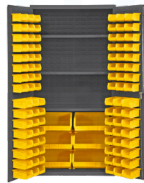
Pick Racks - Page 19

- Available in single-sided, double-sided, and bench models.
- Work with a variety of plastic storage bins.
- Durable powder-coated finish.



Security Cabinets - Page 20

- Heavy Duty All-Welded bin storage cabinets.
- Compatible with hanging and stacking bins.
- Lockable cabinets for content security.
- Available in multiple sizes and configurations.



Wire Shelving/Accessories - Page 21-25

- Constructed from steel with a durable chrome finish.
- Open wire design minimizes dust and improves visibility of stored contents.



Fiberglass Reinforced Totes - Page 26

- Fiberglass reinforced containers nest when empty and stack when full by rotating 180°.
- High operating temp range of -60° to 250° F.
- High weight capacity.



Stack and Nest Containers - Page 27-29

- Stack with or without lids for convenient storage and shipping.
- Totes nest when empty.
- Manufactured from FDA-approved materials.



Attached Lid Container - Page 30-31

- Securely store and transport supplies.
- Maximum product protection.
- Smooth interior for easy cleaning.
- Stack when full, nest when empty.



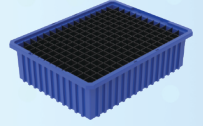
Detached Lid Containers - Page 31

- Containers stack firmly with lids, nest when empty for optimum space utilization.
- Detached lids snap tight for secure closure.
- Secure with optional tote snaps, zip ties, etc.



Grid Containers - Page 32

- Create custom sized compartments using optional lengthwise and crosswise dividers.
- Great for organizing items and creating kits of items that are frequently used together.



ProCart - Page 33

- Box cart or flat top, all in one!
- Versatile, all-purpose plastic utility cart.
- Quickly move supplies through your facility.
- Resists dents, rust proof, never needs painting.



Linen and Waste Carts - Page 34-35

- Thick, rugged walls for added durability.
- Seamless bodies will not crack, chip, fade, rust, dent, splinter or corrode.
- Designed for safe and easy loading/unloading.



Tilt Trucks - Page 36

- Thick, rugged tub walls for added durability and resistance to impact.
- Wheel base and heavy-duty caster combination provides easy maneuverability even with heavy loads.



Waste and Recycling - Page 37

- Recycling and waste disposal in one unit.
- Smooth ergonomic design for easy cleaning.
- A range of labels available.



Platform Trucks - Page 38

- Non-skid structural foam deck is easy-to-clean and won't rot, chip or rust.
- Handles and rails feature a durable, powder-coated finish.



Fire Safety Storage - Page 38

- Durable, rust and acid resistant.
- In full compliance with OSHA and NFPA standards.
- Sturdy all welded construction.



Hanging and Stacking Bins

- Separate look-alike/sound-alike medications using different colours of bins.
- Multiple sizes and colours allow colour coding (vertically and horizontally) and for easy identification of supplies.
- Molded with industrial-grade polymers.
- Bins sit on shelves or hang from panels, racks, rails and carts.
- Bins securely stack to optimize shelf space.
- Wide hopper fronts for easy access.

Standard Colours



30237 fits on 18" deep shelving for a two-bin Kanban system or rotate and pick from both sides.



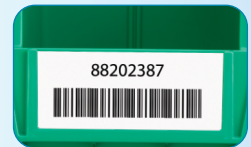
30240BLUE and 30250BLUE bins paired with 30161 louvered panels.



30230CLEAR



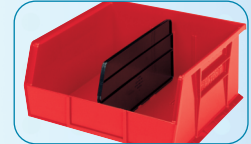
30230BLUE



Large front label slot for easy coding and scanning



"See-through" clear bin lids protect contents

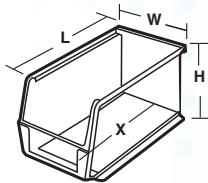


Lengthwise dividers keep items separated

Hanging and Stacking Bin Accessories

Model Number	Description	Outside Dimensions (In.)			Carton Quantity
		Length	Width	Height	
30101	2" x 3-1/4" x 3" Small Bin Cup	2	3-1/4	3	48
30102	2-3/4" x 5" x 3" Large Bin Cup	2-3/4	5	3	24
40410*	10° Angle Label Holder	-	4	2-1/4	24/Pkg.
40445*	45° Angle Label Holder	-	4	2-1/4	24/Pkg.

*Fits hanging and stacking bins with small label area (30210, 30220, 30224)



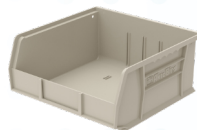
30210YELLOW



30220BLACK



30230GREEN



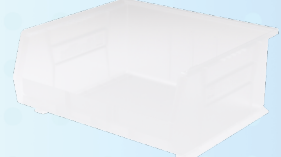
30235STONE



30239RED



30240BLUE



30250CLEAR

Hanging and Stacking Bins

Model Number	Description	Colours	Outside Dimensions (In.)			Other Specifications		
			Length	Width	Height	Weight (lbs)	Capacity (lbs)	Carton Quantity
30210	5-3/8" x 4-1/8" x 3" Bin	Standard	5-3/8	4-1/8	3	0.21	10.00	24
30220	7-3/8" x 4-1/8" x 3" Bin	Standard	7-3/8	4-1/8	3	0.29	10.00	24
30224	10-7/8" x 4-1/8" x 4" Bin	Standard	10-7/8	4-1/8	4	0.53	20.00	12
30230	10-7/8" x 5-1/2" x 5" Bin	Standard	10-7/8	5-1/2	5	0.83	30.00	12
30234	14-3/4" x 5-1/2" x 5" Bin	Standard	14-3/4	5-1/2	5	1.06	50.00	12
30235	10-7/8" x 11" x 5" Bin	Standard	10-7/8	11	5	1.50	50.00	6
30237	9-1/4" x 6" x 5" Bin	Standard	9-1/4	6	5	0.64	20.00	12
30239	10-7/8" x 8-1/4" x 7" Bin	Standard	10-7/8	8-1/4	7	1.50	50.00	6
30240	14-3/4" x 8-1/4" x 7" Bin	Standard	14-3/4	8-1/4	7	1.92	60.00	12
30250	14-3/4" x 16-1/2" x 7" Bin	Standard	14-3/4	16-1/2	7	3.17	75.00	6
30255	10-7/8" x 16-1/2" x 5" Bin	Standard	10-7/8	16-1/2	5	1.93	60.00	6
30260	18" x 11" x 10" Bin	Standard	18	11	10	2.63	60.00	6
30265	18" x 8-1/4" x 9" Bin	Standard	18	8-1/4	9	2.68	60.00	6
30270	18" x 16-1/2" x 11" Bin	Standard	18	16-1/2	11	4.59	75.00	3
30320	8-5/8" x 33" x 5" Bin	Standard	8-5/8	33	5	3.00	80.00	4

*Other colours available with minimum order. Order in carton quantities.

CAUTION: When using bins with hanging systems, do not exceed the weight capacity for the rack, which may be less than the total sum of bin capacities.

Hanging and Stacking Bins Ext.

Model Number	Length Dividers*	Divider Pkg. Qty	Dividers	
			Width Dividers*	Divider Pkg. Qty
30210	40210 (1)	6	-	-
30220	40220 (1)	6	-	-
30224	40224 (1)	6	-	-
30230	40230 (1)	6	41230 (3)	6
30234	40234 (1)	6	-	-
30235	40230 (3)	6	-	-
30237	40237 (1)	6	-	-
30239	40239 (1)	6	-	-
30240	40245 (1)	6	-	-
30250	40245 (3)	6	41250 (3)	6
30255	40230 (3)	6	-	-
30260	40260 (3)	6	-	-
30265	40265 (1)	6	-	-
30270	40270 (3)	6	41270 (3)	6
30320	40321 & 40220 (7)	7 / 6	-	-

* () = Max # of divider slots per bin. Dividers sold separately.

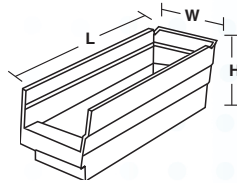
4" Shelf Bins

- Keep supplies neat and organized.
- Create cleaner work areas, eliminate cardboard with reusable, eco-friendly bins.
- Easy to label and colour code for quick identification.
- Works with 12", 18" and 24" deep shelving.
- Bins nest when empty for space savings.
- Built in hang-lock allows bin to tilt out on shelving for complete access.
- Works in temperatures down to -20°F.

Standard Colours



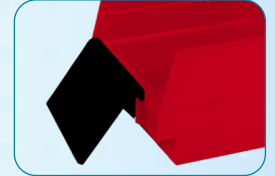
30138BLUE with 40130 Dividers



30130CLEAR



Bin cups lift out for easy access



Label Holder holds large labels or bar-codes.



Dividers create additional compartments

Shelf Bin Accessories

Model Number	Description	Outside Dimensions (In.)			Carton Quantity
		Length	Width	Height	
30101	2" x 3-1/4" x 3" Small Bin Cup	2	3-1/4	3	48
30102	2-3/4" x 5" x 3" Large Bin Cup	2-3/4	5	3	24
40410*	10° Angle Label Holder	-	4	2-1/4	24/Pkg.
40445*	45° Angle Label Holder	-	4	2-1/4	24/Pkg.

*Fits all 4"H shelf bins except 30110.

4"H Shelf Bins

Model Number	Description	Colours	Outside Dimensions (In.)			Other Specifications		
			Length	Width	Height	Weight (lbs)	Capacity (lbs)	Carton Quantity
30110	11-5/8" x 2-3/4" x 4" Shelf Bin	Standard	11-5/8	2-3/4	4	0.29	7.00	24
30120	11-5/8" x 4-1/8" x 4" Shelf Bin	Standard	11-5/8	4-1/8	4	0.38	10.00	24
30130	11-5/8" x 6-5/8" x 4" Shelf Bin	Standard	11-5/8	6-5/8	4	0.51	15.00	12
30150	11-5/8" x 8-3/8" x 4" Shelf Bin	Standard	11-5/8	8-3/8	4	0.65	15.00	12
30170	11-5/8" x 11-1/8" x 4" Shelf Bin	Standard	11-5/8	11-1/8	4	0.80	20.00	12
30128	17-7/8" x 4-1/8" x 4" Shelf Bin	Standard	17-7/8	4-1/8	4	0.58	15.00	12
30138	17-7/8" x 6-5/8" x 4" Shelf Bin	Standard	17-7/8	6-5/8	4	0.68	20.00	12
30158	17-7/8" x 8-3/8" x 4" Shelf Bin	Standard	17-7/8	8-3/8	4	1.00	20.00	12
30178	17-7/8" x 11-1/8" x 4" Shelf Bin	Standard	17-7/8	11-1/8	4	1.10	20.00	12
30124	23-5/8" x 4-1/8" x 4" Shelf Bin	Standard	23-5/8	4-1/8	4	0.85	20.00	12
30164	23-5/8" x 6-5/8" x 4" Shelf Bin	Standard	23-5/8	6-5/8	4	1.21	20.00	6
30184	23-5/8" x 8-3/8" x 4" Shelf Bin	Standard	23-5/8	8-3/8	4	1.40	20.00	6
30174	23-5/8" x 11-1/8" x 4" Shelf Bin	Standard	23-5/8	11-1/8	4	1.97	20.00	6

*Other colours available with minimum order. Order in carton quantities.

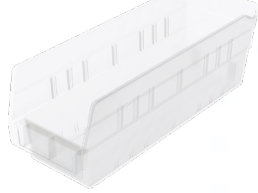
4"H Shelf Bins Ext.

Model Number	Cups Per Bin		Dividers	
	Small 30101	Large 30102	Width Dividers*	Divider Pkg. Qty
30110	3	-	-	-
30120	5	2	40120 (7)	24
30130	9	4	40130 (7)	24
30150	11	4	40150 (7)	24
30170	15	6	40170 (7)	24
30128	8	3	40120 (7)	24
30138	15	6	40130 (7)	24
30158	15	6	40150 (7)	24
30178	25	12	40170 (7)	24
30124	11	4	40120 (7)	24
30164	21	8	40130 (7)	24
30184	25	8	40150 (7)	24
30174	35	16	40170 (7)	24

* () = Max # of divider slots per bin. Dividers sold separately.



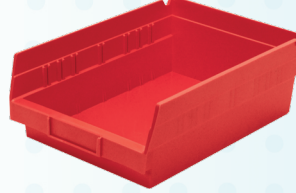
30110BLUE



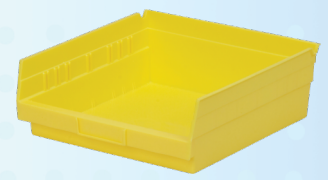
30120CLEAR



30130GREEN



30150RED



30170YELLOW

6" Shelf Bins

- 6" tall bins expand your storage capacity up to 85% over traditional 4" bins.
- Superior, durable construction compared to corrugated bins.
- Width dividers keep items neatly separated.
- Rolled ridge for added strength when filled to maximum capacity.
- Works with 12", 18" and 24" deep shelving.

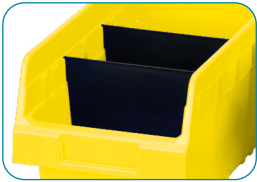
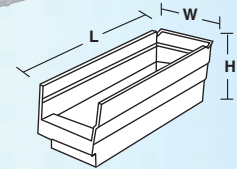
Standard Colours



30048RED

30094BLUE

30098CLEAR



Black width dividers available for all sizes.



Large handle makes bins easy to carry.



Label Holder holds large labels or bar-codes.



Large label area on front of bin.

Shelf Bin Accessories

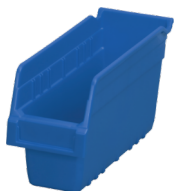
Model Number	Description	Outside Dimensions (In.)			Carton Quantity
		Length	Width	Height	
40410	10° Angle Label Holder	3/10	4	2-1/4	24/Pkg.
40445	45° Angle Label Holder	3/10	4	2-1/4	24/Pkg.

6"H Shelf Bins								
Model Number	Description	Colours	Outside Dimensions (In.)			Other Specifications		
			Length	Width	Height	Weight (lbs)	Capacity (lbs)	Carton Quantity
30040	11-5/8" x 4-1/8" x 6" Shelf Bin	Standard	11-5/8	4-1/8	6	0.55	20.00	16
30090	11-5/8" x 6-5/8" x 6" Shelf Bin	Standard	11-5/8	6-5/8	6	0.71	30.00	10
30080	11-5/8" x 8-3/8" x 6" Shelf Bin	Standard	11-5/8	8-3/8	6	0.89	35.00	8
30048	17-7/8" x 4-1/8" x 6" Shelf Bin	Standard	17-7/8	4-1/8	6	0.83	25.00	8
30098	17-7/8" x 6-5/8" x 6" Shelf Bin	Standard	17-7/8	6-5/8	6	1.04	35.00	10
30088	17-7/8" x 8-3/8" x 6" Shelf Bin	Standard	17-7/8	8-3/8	6	1.25	35.00	8
30094	23-5/8" x 6-5/8" x 6" Shelf Bin	Standard	23-5/8	6-5/8	6	1.43	35.00	10
30084	23-5/8" x 8-3/8" x 6" Shelf Bin	Standard	23-5/8	8-3/8	6	1.98	35.00	6
30014	23-5/8" x 11-1/8" x 6" Shelf Bin	Standard	23-5/8	11-1/8	6	2.38	35.00	6

*Other colours available with minimum order. Order in carton quantities.

6"H Shelf Bins Ext.		
Model Number	Dividers	
	Width Dividers*	Divider Pkg. Qty
30040	40020 (7)	12
30090	40030 (7)	12
30080	40040 (7)	12
30048	40020 (7)	12
30098	40030 (7)	12
30088	40040 (7)	12
30094	40030 (7)	12
30084	40040 (7)	12
30014	-	-

* () = Max # of divider slots per bin. Dividers sold separately.



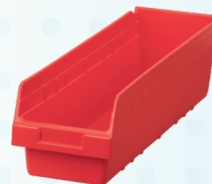
30040BLUE



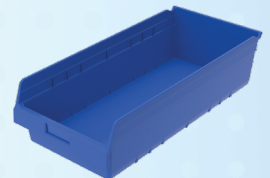
30080RED



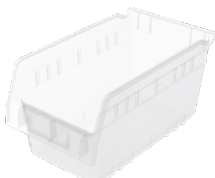
30098BLUE



30094RED



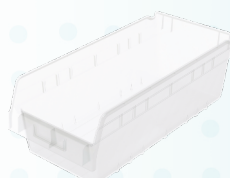
30014BLUE



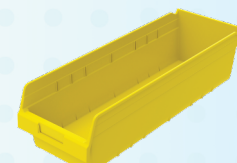
30090CLEAR



30048YELLOW



30088CLEAR



30084YELLOW

Stack and Store Bins

- Eliminate corrugated containers from storage areas.
- Wide hopper front for easy access.
- Same size bins can be stacked on one another, on flooring or shelving.
- Stacking bins are ideal for large, bulky items.
- Large front surface for easy labeling.

Standard Colours

BL **CL** **GY**



Large comfort grip handles for easy lifting.



Side ribs add reinforcement for stacking stability.



Hopper front for easy access.



13018GREY and 13018BLUE

13014BLUE



13017SCLAR



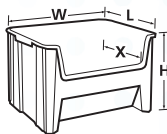
13018BLUE



AK74-1848017B-CHROME
Stack and Store Bin Wire System

Stack and Store Bins									
			Outside Dimensions (In.)			Other Specifications			
Model Number	Description	Colours	Length	Width	Height	Weight (lbs)	Capacity (lbs)	Carton Quantity	
13014	17-1/2" x 10-7/8" x 12-1/2" Bin	Standard	17-1/2	10-7/8	12-1/2	3.25	75.00	4	
13017	15-1/4" x 19-7/8" x 12-7/16" Bin	Standard	15-1/4	19-7/8	12-7/16	4.67	75.00	3	
13018	17-1/2" x 16" x 12-1/2" Bin	Standard	17-1/2	16-1/2	12-1/2	4.50	75.00	2	

*Other colours available with minimum order. Order in carton quantities.



Stack and Store Bin Wire Shelf Kits									
			Outside Dimensions (In.)			Other Specifications			
Model Number	Description	Colours	Depth	Width	Height	Weight (lbs)	Bin Qty	Shelf Qty	
AK74-1836014	18" x 36" x 74" Shelf w/ 13014 Bins	Standard	18	36	74	96.17	12	5	
AK74-1836018	18" x 36" x 74" Shelf w/ 13018 Bins	Standard	18	36	74	93.17	8	5	
AK74-1848014	18" x 48" x 74" Shelf w/ 13014 Bins	Standard	18	48	74	118.27	16	5	
AK74-1848017	18" x 48" x 74" Shelf w/ 13017 Bins	Standard	18	48	74	103.63	8	5	
AK74-1848018	18" x 48" x 74" Shelf w/ 13018 Bins	Standard	18	48	74	102.27	8	5	

*Shelf available in chrome and epoxy finish. Specify bin colour and shelf finish when ordering.

1800 Series Bins

- Storage system for heavy, bulky items.
- Strong, durable, molded of industrial grade polymers.
- Stackable with reinforcing ribs to prevent spreading under heavy loads.
- Front and back finger grips for easy handling.
- One black width divider included per bin.

Standard Colours

BE



30358 Bins with AK63-24606MCHROME
1800 Series Shelf Bin Mobile Wire System



30348BEIGE



Removable divider for increased storage flexibility



Large front label area for content identification



Curved-bottom hopper front for easy content access

1800 Series Shelf Bins								
			Outside Dimensions (In.)			Other Specifications		
Model Number	Description	Colours	Length	Width	Height	Weight (lbs)	Capacity (lbs)	Carton Quantity
30348BEIGE	20-1/2" x 8-1/4" x 7 Shelf Bin	Beige	20-1/2	8-1/4	7	3.33	60.00	6
30358BEIGE	20-1/2" x 11" x 7 Shelf Bin	Beige	20-1/2	11	7	4.37	75.00	6

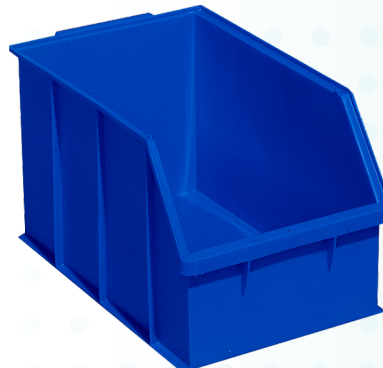
*Order in carton quantities.

High Visibility Shelf Bins

- Large hopped front for maximum visibility of contents.
- Works with standard steel and wire shelving or with gravity flow racking.
- Resistant to weak acids, alkalis, water, rust and corrosion proof.
- Visible label area for easy identification of contents.
- AW30600 and AW30605 can securely stack for maximum space utilization.
- AW30550 is ideal for long items. Optional rear hole version available to chain bin.

Standard Colours

BL RD YL



AW30600BLUE



AW30550BLUE



AW30605BLUE

High Visibility Shelf Bins								
			Outside Dimensions (In.)			Other Specifications		
Model Number	Description	Colours	Length	Width	Height	Weight (lbs)	Capacity (lbs)	Carton Quantity
AW30550	24" x 6" x 5", High Visibility Shelf Bin	Standard	24-1/4	6	5-3/4	1.40	20.00	8
AW30600	18" x 10" x 10", High Visibility Shelf Bin	Blue	18	10-3/8	10	2.80	50.00	4
AW30605	16" x 16" x 8", High Visibility Shelf Bin	Blue	16	16	8-1/8	2.30	50.00	6

*Other colours available with minimum order. Order in carton quantities.

Super-Size Bins

- Perfect for organizing and protecting large or bulky items.
- Heavy-duty bins stack securely on top of each other or sit on shelving.
- Molded of industrial-grade polymers.
- Dividers available to expanded storage options.
- Easy to carry with large handle molded onto the back of the bin.

Standard Colours



Keep parts separated with optional length dividers. Available on select sizes.



Keep parts separated with optional width dividers. Available on select sizes.



Large handle at back of bin for easy handling.



30287RED



30286SCLAR



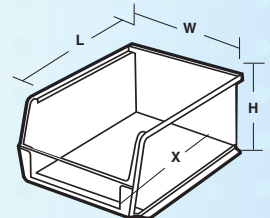
AK74-2448282Y-CHROME
Super-Size Bin Wire System

WIRE SHELVING KITS

Chrome vs Epoxy

Shelf kits are available in both chrome or grey epoxy finish. Chrome plated finish is very durable and is ideal for dry storage environments. Grey epoxy is the ideal solution for high humidity, wet, or walk-in-cooler applications. more economical, small footprint, easy to remove bins from rails. Specify finish when ordering.

See page 21-25 for more information.



Super-Size Shelf Bins								
Model Number	Description	Colours	Outside Dimensions (In.)			Other Specifications		
			Length	Width	Height	Weight (lbs)	Capacity (lbs)	Carton Quantity
30280	20" x 12-3/8" x 6" Super-Size Bin	Standard	20	12-3/8	6	2.17	200.00	4
30281	20" x 12-3/8" x 8" Super-Size Bin	Standard	20	12-3/8	8	2.57	200.00	3
30282	20" x 12-3/8" x 12" Super-Size Bin	Standard	20	12-3/8	12	3.38	200.00	2
30283	20" x 18-3/8" x 12" Super-Size Bin	Standard	20	18-3/8	12	7.00	300.00	1
30284	23-7/8" x 8-1/4" x 7" Super-Size Bin	Standard	23-7/8	8-1/4	7	3.00	200.00	4
30286	23-7/8" x 11" x 7" Super-Size Bin	Standard	23-7/8	11	7	3.85	200.00	4
30287	23-7/8" x 11" x 10" Super-Size Bin	Standard	23-7/8	11	10	4.97	300.00	4
30288	23-7/8" x 16-1/2" x 11" Super-Size Bin	Standard	23-7/8	16-1/2	11	7.20	300.00	1
30289	23-7/8" x 18-1/4" x 12" Super-Size Bin	Standard	23-7/8	18-1/4	12	8.39	300.00	1
30290	29-1/4" x 18-3/8" x 12" Super-Size Bin	Standard	29-1/4	18-3/8	12	6.86	300.00	1
30292	29-7/8" x 11" x 10" Super-Size Bin	Standard	29-7/8	11	10	5.65	300.00	4
30293	29-7/8" x 16-1/2" x 11" Super-Size Bin	Standard	29-7/8	16-1/2	11	8.20	300.00	1

*Other colours available with minimum order. Order in carton quantities.

Super-Size Shelf Bins Ext.					
Model Number	Length Dividers*	Length Dividers		Width Dividers	
		Divider Pkg. Qty	Width Dividers*	Divider Pkg. Qty	
30280	40280 (3)	2	-	-	
30281	40281 (3)	3	-	-	
30282	40282 (3)	1	-	-	
30283	40282 (3)	1	-	-	
30284	40286 (1)	4	41284 (2)	2	
30286	40286 (3)	4	41286 (2)	2	
30287	40287 (3)	6	41287 (2)	6	
30288	40287 (3)	6	41288 (2)	6	
30289	-	-	41289 (2)	2	
30290	40290 (3)	1	-	-	
30292	40292 (3)	6	41287 (2)	6	
30293	40292 (3)	6	41288 (2)	6	

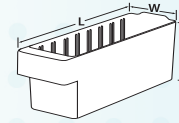
* () = Max # of divider slots per bin. Dividers sold separately.

Drawer Bins

- Offered in 12" or 18" depths to work with shelving.
- Easy to label and colour code inventory for quick identification of supplies.
- Wide front handle for easy gripping.
- Drawers fit securely in cabinets or enclosed steel shelving for dust-free storage.
- Dividers available to keep contents neatly separated in drawers.



31168CLEAR



Large label area and wide handle

Standard Colours

BL

Drawer Bins									
Model Number	Description	Colours	Outside Dimensions (In.)			Other Specifications			
			Length	Width	Height	Weight (lbs)	Capacity (lbs)	Carton Quantity	
31142	12" x 3-3/4" x 4-5/8" Drawer Bin	Standard	11-5/8	3-3/4	4-5/8	0.80	15.00	6	
31148	18" x 3-3/4" x 4-5/8" Drawer Bin	Standard	17-5/8	3-3/4	4-5/8	1.09	20.00	6	
31162	12" x 5-9/16" x 4-5/8" Drawer Bin	Standard	11-5/8	5-9/16	4-5/8	0.97	20.00	6	
31168	18" x 5-9/16" x 4-5/8" Drawer Bin	Standard	17-5/8	5-9/16	4-5/8	1.57	25.00	6	
31182	12" x 8-3/8" x 4-5/8" Drawer Bin	Standard	11-5/8	8-3/8	4-5/8	1.30	20.00	4	
31188	18" x 8-3/8" x 4-5/8" Drawer Bin	Standard	17-5/8	8-3/8	4-5/8	2.09	25.00	4	
31112	12" x 11-1/8" x 4-5/8" Drawer Bin	Standard	11-5/8	11-1/8	4-5/8	1.59	25.00	4	
31118	18" x 11-1/8" x 4-5/8" Drawer Bin	Standard	17-5/8	11-1/8	4-5/8	2.25	25.00	4	

*Other colours available with minimum order. Order in carton quantities.

Drawer Bins Ext.			
Model Number	Dividers		Carton Quantity
	Width	Dividers*	
31142	41440 (8)	6	6
31148	41440 (13)	6	6
31162	41460 (8)	6	6
31168	41460 (13)	6	6
31182	41480 (8)	6	6
31188	41480 (13)	6	6
31112	41410 (8)	8	4
31118	41410 (13)	8	4

* () = Max # of divider slots per bin. Dividers sold separately.

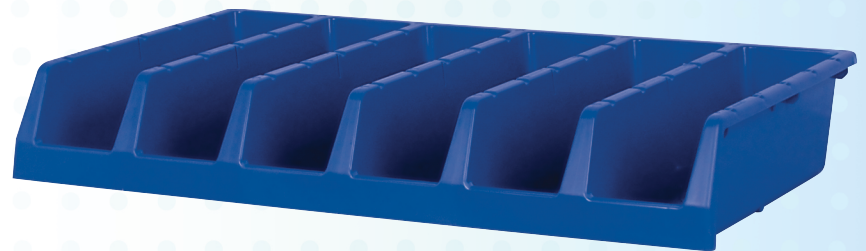


Backstop tab ensures bins tilt out without falling



System Bins

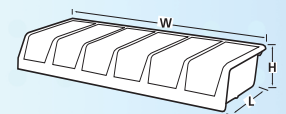
- Designed to fit on a 36" wide steel or wire shelving, cabinets and drawers.
- Sturdy interior double-wall construction.
- Bins nest when empty to conserve space.
- Available in 12" or 18" depths.
- Smooth surfaces are easy to fill, handle, and keep clean.
- 30312 inside bin dimension is 10-3/8"L x 3-5/8"W.
- 30318 inside bin dimension is 16-3/8"L x 3-5/8"W.



30318BLUE

Standard Colours

BL RD YL

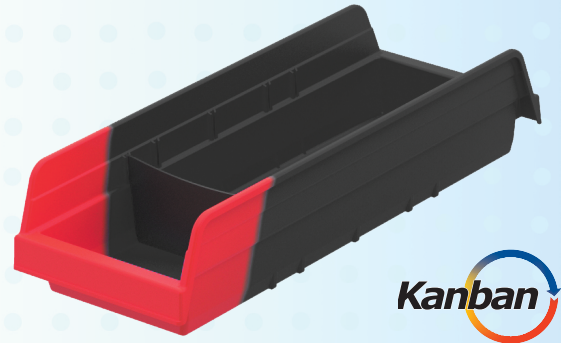


System Bins									
Model Number	Description	Colours	Outside Dimensions (In.)			Other Specifications			
			Length	Width	Height	Weight (lbs)	Capacity (lbs)	Carton Quantity	
30312	33" x 12" x 5" Systems Bin	Standard	12	33	5	2.37	-	5	
30318	33" x 18" x 5" Systems Bin	Standard	18	33	5	4.05	-	5	

*Other colours available with minimum order. Order in carton quantities.

Indicator Two-Tone Inventory Control Bin

- Bright orange or red trigger colour shows low stock levels.
- Innovative double-hopper bins can be filled or picked from both sides.
- Large label area on both sides of the bin.
- Rolled ridge provides added strength and durability.
- Width dividers used to separate reserve stock.
- Prevents stock outs with visual recognition when supplies need to be replenished.
- Low cost alternative to high end inventory control systems.

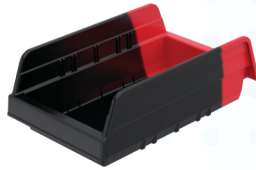


36468 (Black/Red)

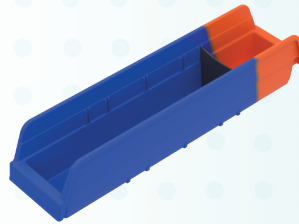
Standard Colours



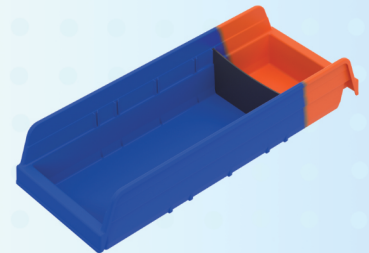
36442 (Black/Red)



36462 (Black/Red)



36448 (Blue/Orange)



36468 (Blue/Orange)

Indicator Bins									
Model Number	Description	Colours	Outside Dimensions (In.)			Other Specifications			
			Length	Width	Height	Weight (lbs)	Capacity (lbs)	Carton Quantity	
36442	11-5/8" x 4-1/8" x 4" Indicator Bin	Standard	11-5/8	4-1/8	4	0.39	10.00	24	
36448	17-7/8" x 4-1/8" x 4" Indicator Bin	Standard	17-7/8	4-1/8	4	0.63	15.00	12	
36462	11-5/8" x 6-5/8" x 4" Indicator Bin	Standard	11-5/8	6-5/8	4	0.54	15.00	12	
36468	17-7/8" x 6-5/8" x 4" Indicator Bin	Standard	17-7/8	6-5/8	4	0.82	20.00	12	

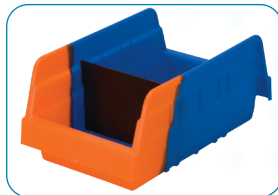
*Order in carton quantities.

Indicator Bins Ext.		
Model Number	Dividers	
	Width Dividers*	Divider Pkg. Qty
36442	40120 (5)	24
36448	40442 (5)	12
36462	40130 (5)	24
36468	40462 (5)	12

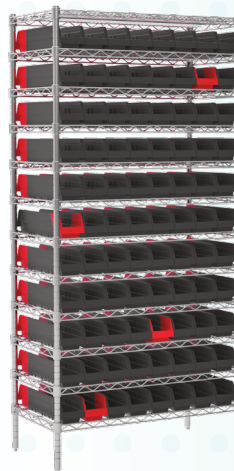
* () = Max # of divider slots per bin. Dividers sold separately.



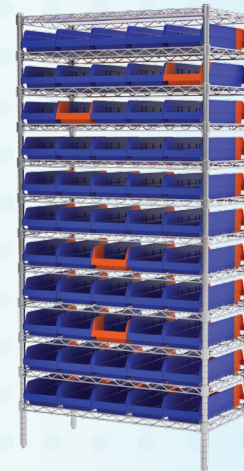
Stock | Pick | Flip | Replenish



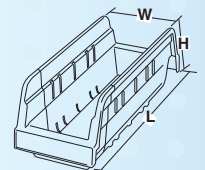
Width dividers available for all sizes (sold separately)



AK74-1836448BR-CHROME



AK74-1836468BO-CHROME



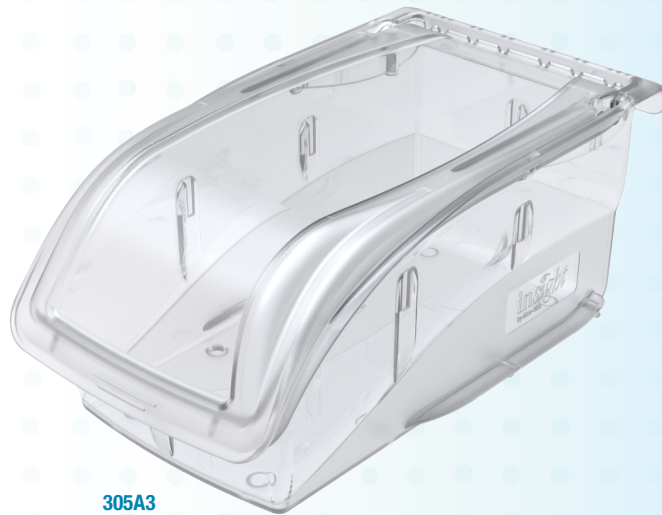
Indicator Bin Shelf Kits									
Model Number	Description	Colours	Outside Dimensions (In.)			Other Specifications			
			Depth	Width	Height	Weight (lbs)	Bin Qty	Shelf Qty	
AK74-1236442	12" x 36" x 74" Shelf w/ 36442	Standard	12	36	74	118.08	88	12	
AK74-1836448	18" x 36" x 74" Shelf w/ 36448	Standard	18	36	74	173.16	88	12	
AK74-1236462	12" x 36" x 74" Shelf w/ 36462	Standard	12	36	74	113.46	55	12	
AK74-1836468	18" x 36" x 74" Shelf w/ 36468	Standard	18	36	74	162.82	55	12	
AK74-1248442	12" x 48" x 74" Shelf w/ 36442	Standard	12	48	74	155.91	121	12	
AK74-1848448	18" x 48" x 74" Shelf w/ 36448	Standard	18	48	74	215.79	121	12	
AK74-1248462	12" x 48" x 74" Shelf w/ 36462	Standard	12	48	74	144.36	66	12	
AK74-1848468	18" x 48" x 74" Shelf w/ 36468	Standard	18	48	74	193.68	66	12	

*Other colours available with minimum order. Order in carton quantities.

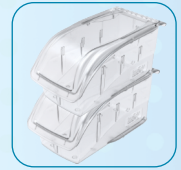
InSight® Bins

- Provide maximum visibility to users in a sleek, modern bin design.
- Can stack, sit on shelving, or hang on panels, rails or racks.
- Optional lids protect contents from dust and will stack with lids in place.
- No-tip feature when bins are stacked.
- Large label area for part identification and bar-code scanning.
- Bins are made of high-impact polycarbonate and are autoclavable up to 250° F.

Standard Colours



305A3



Bins stack with lids in place



Lids protect bin contents from dust

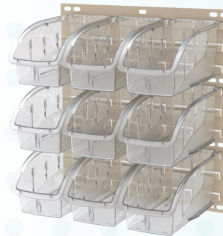


305A1

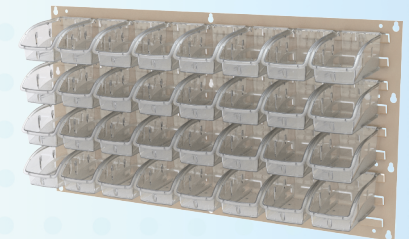
305A5

305A3

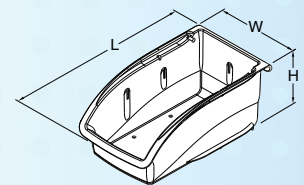
305B1



Louvered panel 30618 shown with 305B1 bins



Louvered panel 30636 shown with 305A3 bins



Insight Bins								
Model Number	Description	Colours	Outside Dimensions (In.)			Other Specifications		
			Length	Width	Height	Weight (lbs)	Capacity (lbs)	Carton Quantity
305A1	5-3/8" x 4-1/8" x 3-1/4" Bin	Standard	5-3/8	4-1/8	3-1/4	0.29	10.00	16
305A3	7-3/8" x 4-1/8" x 3-1/4" Bin	Standard	7-3/8	4-1/8	3-1/4	1.10	10.00	16
305A5	10-7/8" x 4-1/8" x 3-1/4" Bin	Standard	10-7/8	4-1/8	3-1/4	0.55	15.00	12
305B1	10-7/8" x 5-1/2" x 5-1/4" Bin	Standard	10-7/8	5-1/2	5-1/4	1.03	25.00	12

*Order in carton quantities.

Insight Bins Ext.				
Model Number	Lids		Dividers	
	Lid	Lid Pkg. Qty	Length Dividers*	Divider Pkg. Qty
305A1	305A2	16	405A1	8
305A3	305A4	16	405A3	8
305A5	305A6	12	405A5	6
305B1	305B2	12	405B1	6

*Dividers and lids sold separately.

Tilt View Bins

- Space-saving system will improve organization and efficiency by keeping supplies in view.
- Can be used on a desk, attached to steel rails, frames or louvered panels, and are wall mountable.
- Cabinets are made of high-impact polystyrene.
- Bins made of polystyrene (GPS).
- Molded-in label holder (card stock labels included).
- 06702 slides apart to form two separate bins.



06704

Standard Colours



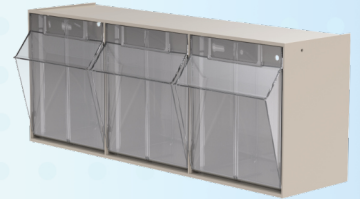
Bins blend into any setting



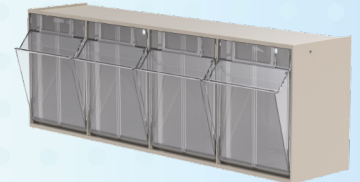
06702 can be separated to single bins



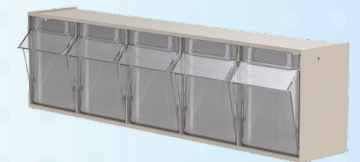
06702



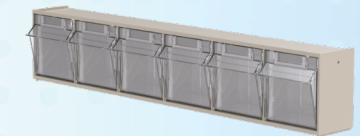
06703



06704



06705



06706

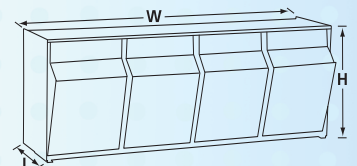


Bins stack securely



06704 Stacked and labeled

Tilt View Bins								
Model Number	Description	Colours	Outside Dimensions (In.)			Other Specifications		
			Length	Width	Height	Weight (lbs)	Capacity (lbs)	Carton Quantity
06702	2-Bin Tilt View	Standard	12-5/16	23-5/8	14	14.15	30.00	1
06703	3-Bin Tilt View	Standard	7-7/8	23-5/8	9-7/16	7.30	30.00	1
06704	4-Bin Tilt View	Standard	6-3/4	23-5/8	8-3/16	6.00	25.00	1
06705	5-Bin Tilt View	Standard	5-3/8	23-5/8	6-1/2	3.90	20.00	1
06706	6-Bin Tilt View	Standard	3-3/4	23-5/8	4-1/2	1.95	15.00	1



Tote Caddy

- Compact, hand-held supply caddy.
- Functional, deep compartments hold loose items, medical and cleaning supplies or tools for easy transport.
- The perfect phlebotomy caddy.
- Molded of heavy-duty, industrial-grade polymers for lasting durability.

Standard Colours

BL



09185BLUE

Tote Caddy			Outside Dimensions (In.)			Other Specifications		
Model Number	Description	Colours	Length	Width	Height	Weight (lbs)	Capacity (lbs)	Carton Quantity
09185	13-7/8" x 18-3/8" x 9" Tote Caddy	Standard	13-7/8	18-3/8	9	2.66	-	6

*Order in carton quantities.



09185BLUE with Maintenance Supplies

09185BLUE with Medical Supplies

Supply Box

- Great as a supply transport tote or emergency box.
- Removable tray keeps smaller items quickly accessible.
- Molded of heavy-duty, industrial-grade polymers for lasting durability.
- Oversized padlock eye accepts a variety of padlocks or zip ties in order to make the box tamper-evident.

Standard Colours

CL RD



09514CFT

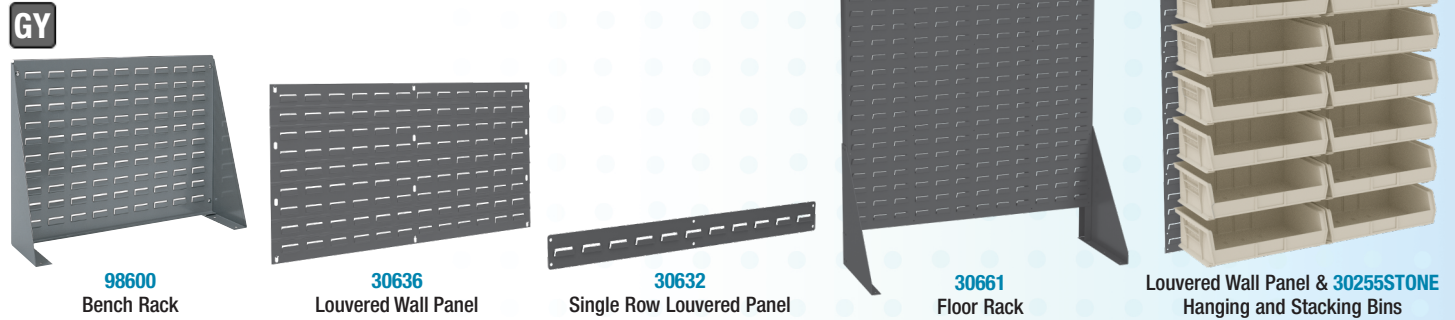
Supply Box			Outside Dimensions (In.)			Other Specifications		
Model Number	Description	Colours	Length	Width	Height	Weight (lbs)	Capacity (lbs)	Carton Quantity
09514	14" x 8-1/8" x 8-1/8" Supply Toolbox	Standard	14	8-1/8	8-1/8	2.00	-	3 / 6*

*Order in carton quantities. *Red version ships in cartons of 6, clear version ships in cartons of 3.

Louvered Panels, Floor Racks & Bench Racks

- Louvered Panels securely support hanging and stacking bins, InSight® bins, or steel cabinets (sold separately).
- Heavy-duty 16-gauge, cold-rolled steel for strength and durability.
- Wall-mounted units keep items out of the way, off the floor and off the work table.
- Floor racks can be placed near work areas to improve productivity.
- Mobile kits mobilize racks; easily relocate supplies without unloading and reloading bins.

Standard Colours



Louvered Hanging Systems																				
Model No.	Description	Dimensions (In.)			Rack Wt. Cap. (lbs)	Bin Quantity Per Louvered Hanging System														
		Length	Width	Height		30210	30220	30224	30230	30234	30235	30237	30239	30240	30250	30255	30260	30265	30270	
30618	Louvered Wall Panel	18	5/16	19	160	16	16	12	9	9	3	6	4	4	2	3	1	2	1	
30632	Single Row Louvered Panel	2	31-15/16	5/16	80	7	7	7	5	5	2	5	3	3	1	1	2	3	1	
30636	Louvered Wall Panel	35-3/4	5/16	19	160	32	32	24	18	18	9	15	8	8	4	6	3	4	2	
30161	Louvered Wall Panel	36	5/16	61	1000	120	120	80	60	60	30	50	28	28	14	20	15	24	10	
30118	Louvered Wall Panel	18	5/16	61	500	60	60	40	30	30	10	20	14	14	7	10	5	12	5	
30661	Single-Sided Rivet Floor Rack	36-3/16	13-1/2	66-3/8	500	120	120	80	60	60	30	50	28	28	14	20	15	24	10	
30676	Double-Sided Rivet Floor Rack	36-3/16	25	66-3/8	1000	240	240	160	120	120	60	100	56	56	28	40	30	48	20	
98600	Bench Rack	27-15/16	8-9/16	19-9/16	120	30	30	18	12	12	6	12	6	6	2	3	2	6	-	
LVDMOBILE	Gray Mobile Kit for 30676	-	-	-	1500	-	-	-	-	-	-	-	-	-	-	-	-	-	-	
30661DOLLY	Floor Rack Dolly for 30661	37	24	6	500	-	-	-	-	-	-	-	-	-	-	-	-	-	-	

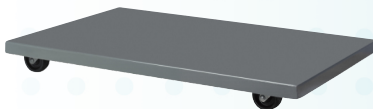
CAUTION: When using bins with hanging systems, do not exceed the weight capacity for the rack, which may be less than the total sum of bin capacities.



30661 & 30661DOLLY with Hanging and Stacking Bins



30661DOLLY



LVDMOBILE



30653 with Hanging and Stacking Bins

Rail Bin Hanging Systems

- Steel Rail Racks securely support hanging and stacking bins, InSight® bins, or steel cabinets (sold separately).
- Heavy-duty steel for strength and durability.
- Wall-mounted units keep items out of the way, off the floor and off the work table.
- Floor racks can be placed near work areas to improve productivity.
- Mobile kit mobilize racks; easily relocate supplies without unloading and reloading bins.

Standard Colours

GY



30016 Rail Rack with 30220SCALAR Bins



30016 Rail Rack with 30235YELLOW Bins



30812 Mobile Rack Cart with 30230YELLOW Bins

HOW TO CHOOSE: Louvers vs. Rails

Louvers: Steel panels with rows of punched louvers. More storage capacity, greater selection of styles. Panels can be attached to the wall, freeing floor space. Rivet racks come with the panels already riveted to the frame.

Rails: Constructed of individual steel rails that span between uprights. Weigh less than louvered panels, more economical, small footprint, easy to remove bins from rails.

Rail Bin Hanging Systems																				
Model No.	Description	Dimensions (In.)			Rack Wt. Cap. (lbs)	Bin Quantity Per Louvered Hanging System														
		Length	Width	Height		30210	30220	30224	30230	30234	30235	30237	30239	30240	30250	30255	30260	30265	30270	
30008	Single Sided Rail Rack	36	14-1/8	53	250	96	96	64	48	48	24	40	24	24	12	16	12	16	8	
30016	Double Sided Rail Rack	36	20	53	500	192	192	128	96	96	48	80	48	48	24	32	24	32	16	
30148	Wall Mount Rail	47-13/16	5-8	3	110	11	11	11	8	8	4	8	5	5	2	2	4	5	2	
30812	Mobile Rail Bin Cart	38-1/2	24	36-1/2	250	96	96	64	48	48	24	40	24	24	12	16	12	16	8	
30424	Mobile Kit - Casters and Handle	-	-	-	500	-	-	-	-	-	-	-	-	-	-	-	-	-	-	
98400	Suspension Straps (Set of 2)*	-	-	-	-	-	-	-	-	-	-	-	-	-	-	-	-	-	-	

*Can be assembled as a 12 or 16 rail rack.

*98400 suspension straps required for hanging 19-Series cabinets. Two straps needed to secure cabinet to rack.

CAUTION: When using bins with hanging systems, do not exceed the weight capacity for the rack, which may be less than the total sum of bin capacities.



30016 Rail Rack with 30240SCALAR Bins



30148 Single Row Steel Rail



30424 Mobile Kit for Rail Rack



30424 Mobile Kit with Rail Rack

19-Series Steel Storage Cabinets

- Great for organizing small items such as dental instruments or lab supplies.
- Helps to keep inventory accurate and dust-free.
- Clear windows provide easy visibility of contents.
- Stackable, wall mountable or can be used on 36" wide shelving.
- Galvannealed steel frame with full steel shelf under each row of drawers.
- Each 19-Series cabinets exterior dimensions are 11"D x 17"W x 11"H.



Standard Colours

GY



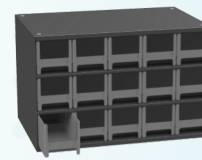
19228



19320



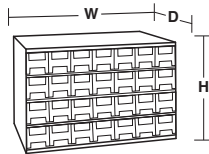
19416



19715



19909



19-Series Heavy-Duty Steel Cabinets								
Model Number	Description	Colours	Drawer Dimensions (In.)			Other Specifications		
			Length	Width	Height	Weight (lbs)	Bins Per Cabinet	Carton Quantity
19228	Steel Modular Cabinet w/ 28 Drawers	Standard	2-3/16	2-1/16	10-9/16	20.50	28	1
19320	Steel Modular Cabinet w/ 20 Drawers	Standard	3-3/16	2-1/16	10-9/16	20.50	20	1
19416	Steel Modular Cabinet w/ 16 Drawers	Standard	4	2-1/8	10-9/16	19.50	16	1
19715	Steel Modular Cabinet w/ 15 Drawers	Standard	3-3/16	3-1/16	10-9/16	18.75	15	1
19909	Steel Modular Cabinet w/ 9 Drawers	Standard	5-3/16	3-1/16	10-9/16	18.00	9	1

Steel Pick Racks

- Works with shelf bins, indicator bins, drawer bins, and system bins.
- Angled shelves keep small items at the front of the bin.

Standard Colours

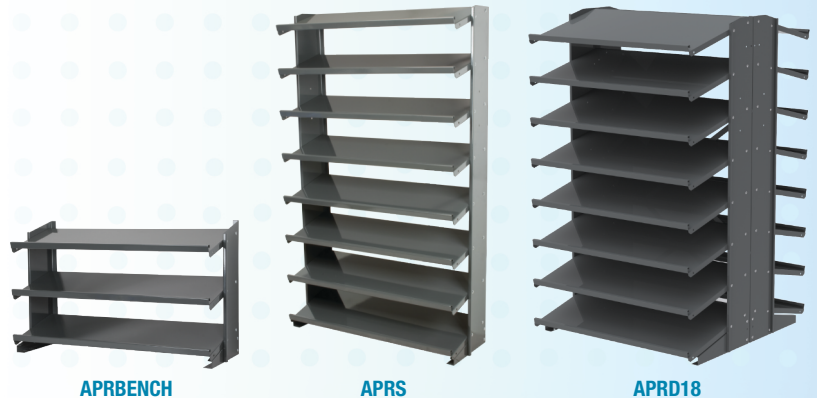
GY



APRD with 30120YELLOW shelf bins and APRDMOBILE

CUSTOM STORAGE SOLUTIONS

Customize Pick Racks with Shelf Bins, Indicator® Bins, Drawer Bins, or System Bins.



Steel Pick Racks								
Model Number	Description	Colours	Outside Dimensions (In.)			Other Specifications		
			Length	Width	Height	Weight (lbs)	Capacity (lbs)	Caster
APRS	Single-Sided Pick Rack (no bins)	Standard	12	36-3/4	60-1/4	110.00	400.00	-
APRD	Double-Sided Pick Rack (no bins)	Standard	24	36-3/4	60-1/4	222.00	800.00	-
APRDMOBILE	Mobile Kit (Handle & Dolly) for Double-Sided Pick Rack	Standard	24	33	4	37.00	500.00	4' x 1 1/2' Polyolefin
APRS18	Single-Sided Pick Rack (no bins)	Standard	18	36-3/4	60-1/4	147.00	900.00*	-
APRD18	Double-Sided Pick Rack (no bins)	Standard	36	36-3/4	60-1/4	280.00	1800.00**	-
APRD18MOBILE	Mobile Kit (Handle & Dolly) for Double-Sided Pick Rack	Standard	37	33	6-3/4	100.00	1800.00	5' x 2' Phenolic
APRBENCH	Bench Pick Rack, No Bins	Standard	12	36-3/4	21-1/4	35.50	-	-

*When anchored to wall and floor. **When anchored to floor.

Storage and Security Cabinets

- Heavy Duty All-Welded Bin Storage Cabinets.
- Available in 18" Depths and 24" Depths.
- Optional steel shelves can be adjusted to various heights.
- Compatible with hanging and stacking bins.

CUSTOM STORAGE SOLUTIONS

Pair Storage Cabinets with Hanging and Stacking Bins, Shelves and Shelf Bins, Indicator® Bins, Drawer Bins, or System Bins.

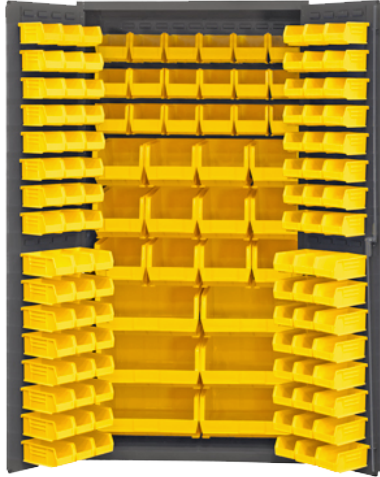
Standard Colours

GY



GI662142B

3501-BDLP-95 with hanging and stacking bins and three FDC-SH-3618-95 shelves.



3501-BDLP-95 with hanging and stacking bins.

Heavy Duty Steel Storage Cabinets								
			Drawer Dimensions (In.)			Other Specifications		
Model Number	Description	Colours	Depth	Width	Height	Weight (lbs)	Bins Per Cabinet	Carton Quantity
3602-BLP-95	Heavy-Duty Steel Cabinet, Louvers Back and Door	Standard	18	36	72	288.00	Variable	1
3501-BDLP-95	Heavy-Duty Steel Cabinet, Louvers Back and Door	Standard	24	36	72	326.00	Variable	1
GI662142B	Heavy-Duty Steel Cabinet, Louvers Back and Door	Standard	24	38	72	334.00	Variable	1
3502-BDLP-95	Heavy-Duty Steel Cabinet, Louvers Back and Door	Standard	24	48	72	400.00	Variable	1
FDC-SH-3618-95	Adjustable Shelf for 3501-BDLP-95 Cabinet	Standard	16-1/2	35-3/4	1-1/5	19.00	-	1
FDC-SH-4818-95	Adjustable Shelf for 3502-BDLP-95 Cabinet	Standard	16-1/2	47-3/4	1-1/5	25.00	-	1

*Other sizes and customizations available upon request with minimum orders. Bins not included.

Fuel Containers

- Various cans for usage with gasoline, diesel, and water.
- Safe, noncorrosive, reliable alternative to filling gas powered engines.
- Manufactured of durable high density polyethylene.
- Small footprint making these fuel containers easy to store in smaller spaces.
- Water cans are ideal for emergency management and maintenance. Easy to pour flexible spout can be stored inside when not in use.



04933SCP

03609SCP

03711SCP

Fuel Containers			
Model Number	Description	Colours	Volume (Litre)
03615SCP	6 Litre + 2.25 Litre Gas / Oil Combo Can	Red	6+2-1/4
07081SCP	5 Litre Gasoline Can	Red	5
07079SCP	10 Litre Gasoline Can	Red	10
07378SCP	10 Litre Gasoline Can w/ Locking Spout	Red	10
07622SCP	20 Litre Gasoline Can	Red	20
07539SCP	25 Litre Gasoline Can	Red	25
07624SCP	20 Litre Kerosene Can	Blue	20
07649SCP	20 Litre Diesel Can	Yellow	20
03609SCP	20 Litre Military Style Gasoline Container	Red	20
03711SCP	20 Litre RV Military Diesel Container	Yellow	20
04933SCP	20 Litre Military Water Container	Blue	20

*Other sizes, customizations and accessories available upon request with minimum orders.
 *No fuel container, including one with a FMD should ever be used to start or accelerate a fire.

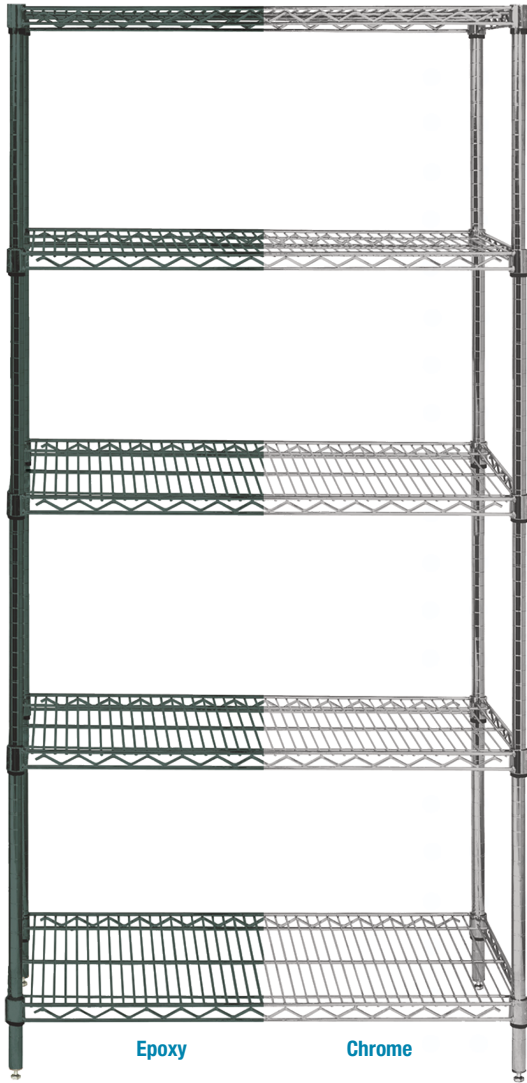


03615SCP

07378SCP

Chrome and Epoxy Wire Shelving

Which wire finish is best for you?



Epoxy

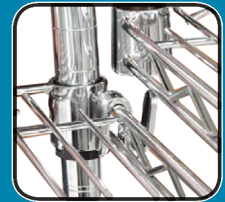
Chrome

Wire shelving is a popular storage system to consumers and industrial users alike. With storage capacities of 600-1,000 lbs per shelf, wire shelving will help organize any area.

The open wire truss-reinforced shelves permit light to penetrate, allow free air circulation and give greater visibility of merchandise. Moisture and dust accumulation are reduced, and maximum effectiveness of sprinkler systems is ensured. Assembly is simple and quick.

ASSEMBLING WIRE SHELVING IS AS EASY AS

1-2-3



CUSTOM STORAGE SOLUTIONS

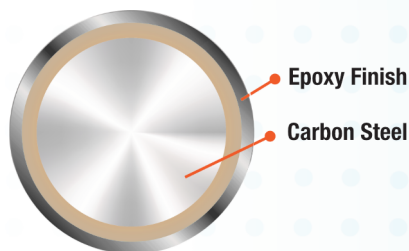
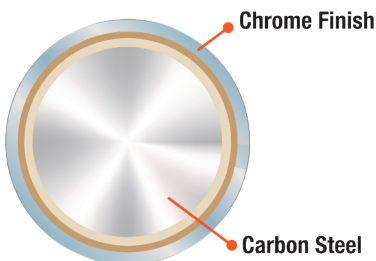
Customize your wire shelving with Shelf Bins, Indicator® Bins, Stacking Bins, Drawer Bins, or System Bins.



Which finish is best for you?

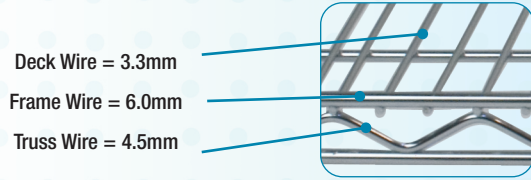
Chrome: Very durable and allows product to be used in any dry storage application.

Epoxy: An ideal solution for high humidity, wet, or walk-in-cooler applications.



Wire Shelving Starter Units

- Meet compliance regulations by getting your supplies up off the floor with wire shelving units.
- Heavy-duty wire shelving units prevent dust accumulation and improve visibility of stored items.
- Assembles in minutes, no tools required.
- Shelf Weight Capacity: 800 lbs. for shelf lengths up to 48", 600 lbs. for shelf lengths over 48".
- Units Include: 4 - Chrome Wire Shelves with Quick-Adjust Post Sleeves, 4 - Posts with Leveling Feet.
- Add labels, see page 25.
- Mobile kits for high density storage available.



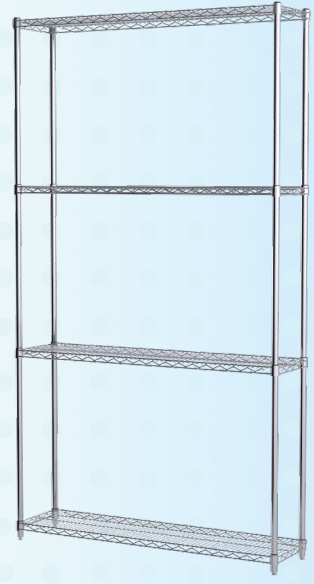
36 x 48 x 54



24 x 48 x 63



18 x 48 x 74



12 x 48 x 86

54"H Wire Shelving Starter Kits						
Model Number	Description	Outside Dimensions (In.)			Other Specifications	
		Length	Width	Height	Post Quantity	Shelf Quantity
AK54-12364	12" x 36" x 54" Shelf Starter Kit	12	36	54	4	4
AK54-12484	12" x 48" x 54" Shelf Starter Kit	12	48	54	4	4
AK54-18364	18" x 36" x 54" Shelf Starter Kit	18	36	54	4	4
AK54-18484	18" x 48" x 54" Shelf Starter Kit	18	48	54	4	4
AK54-18604	18" x 60" x 54" Shelf Starter Kit	18	60	54	4	4
AK54-18724	18" x 72" x 54" Shelf Starter Kit	18	72	54	4	4
AK54-24364	24" x 36" x 54" Shelf Starter Kit	24	36	54	4	4
AK54-24484	24" x 48" x 54" Shelf Starter Kit	24	48	54	4	4
AK54-24604	24" x 60" x 54" Shelf Starter Kit	24	60	54	4	4
AK54-24724	24" x 72" x 54" Shelf Starter Kit	24	72	54	4	4

*Other sizes and customizations available with minimum order. Specify chrome or epoxy finish when ordering.

74"H Wire Shelving Starter Kits						
Model Number	Description	Outside Dimensions (In.)			Other Specifications	
		Length	Width	Height	Post Quantity	Shelf Quantity
AK74-12364	12" x 36" x 74" Shelf Starter Kit	12	36	74	4	4
AK74-12484	12" x 48" x 74" Shelf Starter Kit	12	48	74	4	4
AK74-18364	18" x 36" x 74" Shelf Starter Kit	18	36	74	4	4
AK74-18484	18" x 48" x 74" Shelf Starter Kit	18	48	74	4	4
AK74-18604	18" x 60" x 74" Shelf Starter Kit	18	60	74	4	4
AK74-18724	18" x 72" x 74" Shelf Starter Kit	18	72	74	4	4
AK74-24364	24" x 36" x 74" Shelf Starter Kit	24	36	74	4	4
AK74-24484	24" x 48" x 74" Shelf Starter Kit	24	48	74	4	4
AK74-24604	24" x 60" x 74" Shelf Starter Kit	24	60	74	4	4
AK74-24724	24" x 72" x 74" Shelf Starter Kit	24	72	74	4	4

*Other sizes and customizations available with minimum order. Specify chrome or epoxy finish when ordering.

63"H Wire Shelving Starter Kits						
Model Number	Description	Outside Dimensions (In.)			Other Specifications	
		Length	Width	Height	Post Quantity	Shelf Quantity
AK63-12364	12" x 36" x 63" Shelf Starter Kit	12	36	63	4	4
AK63-12484	12" x 48" x 63" Shelf Starter Kit	12	48	63	4	4
AK63-18364	18" x 36" x 63" Shelf Starter Kit	18	36	63	4	4
AK63-18484	18" x 48" x 63" Shelf Starter Kit	18	48	63	4	4
AK63-18604	18" x 60" x 63" Shelf Starter Kit	18	60	63	4	4
AK63-18724	18" x 72" x 63" Shelf Starter Kit	18	72	63	4	4
AK63-24364	24" x 36" x 63" Shelf Starter Kit	24	36	63	4	4
AK63-24484	24" x 48" x 63" Shelf Starter Kit	24	48	63	4	4
AK63-24604	24" x 60" x 63" Shelf Starter Kit	24	60	63	4	4
AK63-24724	24" x 72" x 63" Shelf Starter Kit	24	72	63	4	4

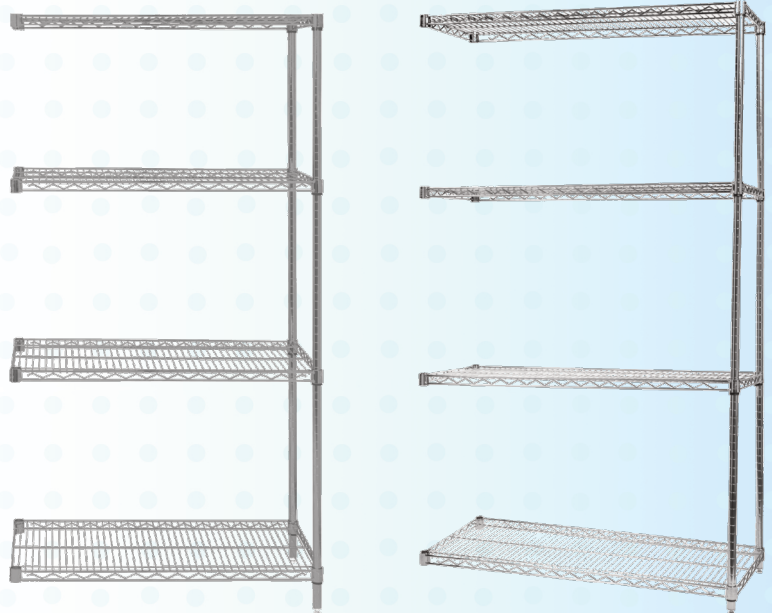
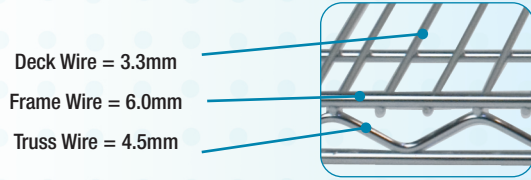
*Other sizes and customizations available with minimum order. Specify chrome or epoxy finish when ordering.

86"H Wire Shelving Starter Kits						
Model Number	Description	Outside Dimensions (In.)			Other Specifications	
		Length	Width	Height	Post Quantity	Shelf Quantity
AK86-12364	12" x 36" x 86" Shelf Starter Kit	12	36	86	4	4
AK86-12484	12" x 48" x 86" Shelf Starter Kit	12	48	86	4	4
AK86-18364	18" x 36" x 86" Shelf Starter Kit	18	36	86	4	4
AK86-18484	18" x 48" x 86" Shelf Starter Kit	18	48	86	4	4
AK86-18604	18" x 60" x 86" Shelf Starter Kit	18	60	86	4	4
AK86-18724	18" x 72" x 86" Shelf Starter Kit	18	72	86	4	4
AK86-24364	24" x 36" x 86" Shelf Starter Kit	24	36	86	4	4
AK86-24484	24" x 48" x 86" Shelf Starter Kit	24	48	86	4	4
AK86-24604	24" x 60" x 86" Shelf Starter Kit	24	60	86	4	4
AK86-24724	24" x 72" x 86" Shelf Starter Kit	24	72	86	4	4

*Other sizes and customizations available with minimum order. Specify chrome or epoxy finish when ordering.

Wire Shelving Adder Units

- Meet compliance regulations by getting your supplies up off the floor with wire shelving units.
- Heavy-duty wire shelving units prevent dust accumulation and improve visibility of stored items.
- Assembles in minutes, no tools required.
- Use adders to extend shelving runs while minimizing required posts needed.
- Shelf Weight Capacity: 800 lbs. for shelf lengths up to 48", 600 lbs. for shelf lengths over 48".
- Units Include: 4 - Chrome Wire Shelves with Quick-Adjust Post Sleeves, 2 - Posts with Leveling Feet, 1 - Package of 8 S-Hooks (2 S-Hooks required per shelf).
- Add optional shelf labels for easier product identification.



18 x 36 x 74 Adder

18 x 48 x 74 Adder

INCLUDES S-HOOKS

1 package of S-Hooks is included with every 4 shelf adder shelf kit. Available in both chrome and epoxy finishes.

54"H Wire Shelving Adder Kits						
Model Number	Description	Outside Dimensions (In.)			Other Specifications	
		Length	Width	Height	Post Quantity	Shelf Quantity
AK54-12364A	12" x 36" x 54" Shelf Adder Kit	12	36	54	2	4
AK54-12484A	12" x 48" x 54" Shelf Adder Kit	12	48	54	2	4
AK54-18364A	18" x 36" x 54" Shelf Adder Kit	18	36	54	2	4
AK54-18484A	18" x 48" x 54" Shelf Adder Kit	18	48	54	2	4
AK54-18604A	18" x 60" x 54" Shelf Adder Kit	18	60	54	2	4
AK54-18724A	18" x 72" x 54" Shelf Adder Kit	18	72	54	2	4
AK54-24364A	24" x 36" x 54" Shelf Adder Kit	24	36	54	2	4
AK54-24484A	24" x 48" x 54" Shelf Adder Kit	24	48	54	2	4
AK54-24604A	24" x 60" x 54" Shelf Adder Kit	24	60	54	2	4
AK54-24724A	24" x 72" x 54" Shelf Adder Kit	24	72	54	2	4

*Other sizes and customizations available with minimum order. Specify chrome or epoxy finish when ordering.

74"H Wire Shelving Adder Kits						
Model Number	Description	Outside Dimensions (In.)			Other Specifications	
		Length	Width	Height	Post Quantity	Shelf Quantity
AK74-12364A	12" x 36" x 74" Shelf Adder Kit	12	36	74	2	4
AK74-12484A	12" x 48" x 74" Shelf Adder Kit	12	48	74	2	4
AK74-18364A	18" x 36" x 74" Shelf Adder Kit	18	36	74	2	4
AK74-18484A	18" x 48" x 74" Shelf Adder Kit	18	48	74	2	4
AK74-18604A	18" x 60" x 74" Shelf Adder Kit	18	60	74	2	4
AK74-18724A	18" x 72" x 74" Shelf Adder Kit	18	72	74	2	4
AK74-24364A	24" x 36" x 74" Shelf Adder Kit	24	36	74	2	4
AK74-24484A	24" x 48" x 74" Shelf Adder Kit	24	48	74	2	4
AK74-24604A	24" x 60" x 74" Shelf Adder Kit	24	60	74	2	4
AK74-24724A	24" x 72" x 74" Shelf Adder Kit	24	72	74	2	4

*Other sizes and customizations available with minimum order. Specify chrome or epoxy finish when ordering.

63"H Wire Shelving Adder Kits						
Model Number	Description	Outside Dimensions (In.)			Other Specifications	
		Length	Width	Height	Post Quantity	Shelf Quantity
AK63-12364A	12" x 36" x 63" Shelf Adder Kit	12	36	63	2	4
AK63-12484A	12" x 48" x 63" Shelf Adder Kit	12	48	63	2	4
AK63-18364A	18" x 36" x 63" Shelf Adder Kit	18	36	63	2	4
AK63-18484A	18" x 48" x 63" Shelf Adder Kit	18	48	63	2	4
AK63-18604A	18" x 60" x 63" Shelf Adder Kit	18	60	63	2	4
AK63-18724A	18" x 72" x 63" Shelf Adder Kit	18	72	63	2	4
AK63-24364A	24" x 36" x 63" Shelf Adder Kit	24	36	63	2	4
AK63-24484A	24" x 48" x 63" Shelf Adder Kit	24	48	63	2	4
AK63-24604A	24" x 60" x 63" Shelf Adder Kit	24	60	63	2	4
AK63-24724A	24" x 72" x 63" Shelf Adder Kit	24	72	63	2	4

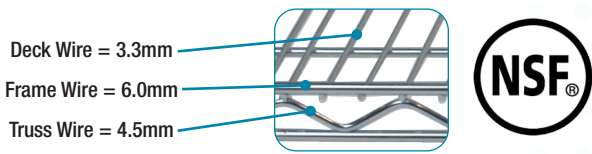
*Other sizes and customizations available with minimum order. Specify chrome or epoxy finish when ordering.

86"H Wire Shelving Adder Kits						
Model Number	Description	Outside Dimensions (In.)			Other Specifications	
		Length	Width	Height	Post Quantity	Shelf Quantity
AK86-12364A	12" x 36" x 86" Shelf Adder Kit	12	36	86	2	4
AK86-12484A	12" x 48" x 86" Shelf Adder Kit	12	48	86	2	4
AK86-18364A	18" x 36" x 86" Shelf Adder Kit	18	36	86	2	4
AK86-18484A	18" x 48" x 86" Shelf Adder Kit	18	48	86	2	4
AK86-18604A	18" x 60" x 86" Shelf Adder Kit	18	60	86	2	4
AK86-18724A	18" x 72" x 86" Shelf Adder Kit	18	72	86	2	4
AK86-24364A	24" x 36" x 86" Shelf Adder Kit	24	36	86	2	4
AK86-24484A	24" x 48" x 86" Shelf Adder Kit	24	48	86	2	4
AK86-24604A	24" x 60" x 86" Shelf Adder Kit	24	60	86	2	4
AK86-24724A	24" x 72" x 86" Shelf Adder Kit	24	72	86	2	4

*Other sizes and customizations available with minimum order. Specify chrome or epoxy finish when ordering.

Wire Shelving Components

Order the exact size shelves, posts and custom components to fit your space requirements!



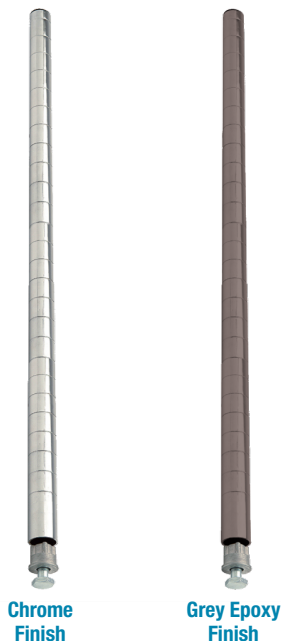
Horizontal Shelves

- NSF Certified Wire Shelves - Plastic Quick Adjust Clips included with each shelf (Replacement part: AWCLIP4PK).
- Weight Capacity (evenly distributed) per shelf: Lengths up to 48" = 800 lbs. Lengths over 48" = 600 lbs.
- Weight Capacity (evenly distributed) per stationary shelving unit = 2,000 lbs.
- Shelving can be assembled in minutes and no special tools are required.



Upright Posts

- Posts include a leveling foot to compensate for uneven surfaces.
- All posts include a plastic post top cap and a base insert for installing feet and optional casters.
- Posts are available in 34"H to 96"H.



Chrome Wire Shelves						
Model Number	Description	Colours	Outside Dimensions (In.)			Carton Quantity
			Length	Width	Height	
AK1236SHELFCHROME	12" x 36" Chrome Wire Shelf	Chrome	12	36	1-1/4	4
AK1248SHELFCHROME	12" x 48" Chrome Wire Shelf	Chrome	12	48	1-1/4	4
AK1836SHELFCHROME	18" x 36" Chrome Wire Shelf	Chrome	18	36	1-1/4	4
AK1848SHELFCHROME	18" x 48" Chrome Wire Shelf	Chrome	18	48	1-1/4	4
AK1860SHELFCHROME	18" x 60" Chrome Wire Shelf	Chrome	18	60	1-1/4	2
AK1872SHELFCHROME	18" x 72" Chrome Wire Shelf	Chrome	18	72	1-1/4	2
AK2436SHELFCHROME	24" x 36" Chrome Wire Shelf	Chrome	24	36	1-1/4	4
AK2448SHELFCHROME	24" x 48" Chrome Wire Shelf	Chrome	24	48	1-1/4	4
AK2460SHELFCHROME	24" x 60" Chrome Wire Shelf	Chrome	24	60	1-1/4	2
AK2472SHELFCHROME	24" x 72" Chrome Wire Shelf	Chrome	24	72	1-1/4	2

*Other sizes, customizations and finishes available with minimum order.

Epoxy Wire Shelves						
Model Number	Description	Colours	Outside Dimensions (In.)			Carton Quantity
			Length	Width	Height	
AK1236SHELFGREY	12" x 36" Grey Epoxy Wire Shelf	Grey	12	36	1-1/4	4
AK1248SHELFGREY	12" x 48" Grey Epoxy Wire Shelf	Grey	12	48	1-1/4	4
AK1836SHELFGREY	18" x 36" Grey Epoxy Wire Shelf	Grey	18	36	1-1/4	4
AK1848SHELFGREY	18" x 48" Grey Epoxy Wire Shelf	Grey	18	48	1-1/4	4
AK1860SHELFGREY	18" x 60" Grey Epoxy Wire Shelf	Grey	18	60	1-1/4	2
AK1872SHELFGREY	18" x 72" Grey Epoxy Wire Shelf	Grey	18	72	1-1/4	2
AK2436SHELFGREY	24" x 36" Grey Epoxy Wire Shelf	Grey	24	36	1-1/4	4
AK2448SHELFGREY	24" x 48" Grey Epoxy Wire Shelf	Grey	24	48	1-1/4	4
AK2460SHELFGREY	24" x 60" Grey Epoxy Wire Shelf	Grey	24	60	1-1/4	2
AK2472SHELFGREY	24" x 72" Grey Epoxy Wire Shelf	Grey	24	72	1-1/4	2

*Other sizes, customizations and finishes available with minimum order.

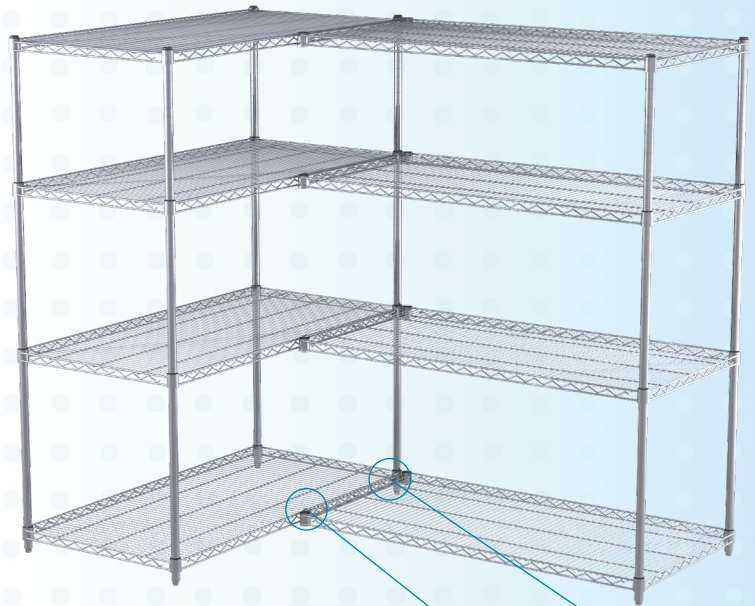
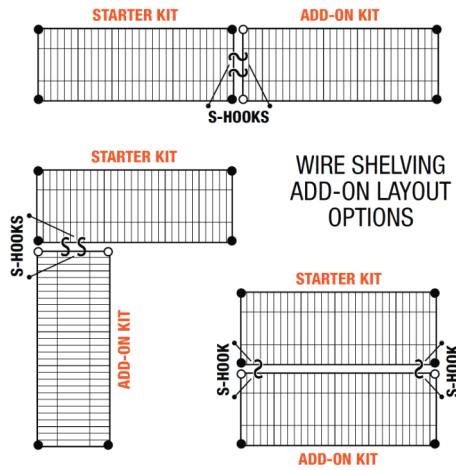
Chrome Wire Posts						
Model Number	Description	Colours	Outside Dimensions (In.)			Carton Quantity
			Length	Width	Height	
AK34POSTCHROME	34" Chrome Shelf Post	Chrome	1-1/4	1-1/4	34	4
AK39POSTCHROME	39" Chrome Shelf Post	Chrome	1-1/4	1-1/4	39	4
AK54POSTCHROME	54" Chrome Shelf Post	Chrome	1-1/4	1-1/4	54	4
AK63POSTCHROME	63" Chrome Shelf Post	Chrome	1-1/4	1-1/4	63	4
AK74POSTCHROME	74" Chrome Shelf Post	Chrome	1-1/4	1-1/4	74	4
AK86POSTCHROME	86" Chrome Shelf Post	Chrome	1-1/4	1-1/4	86	4
AK96POSTCHROME	96" Chrome Shelf Post	Chrome	1-1/4	1-1/4	96	4

*Other sizes, customizations and finishes available with minimum order.

Epoxy Wire Posts						
Model Number	Description	Colours	Outside Dimensions (In.)			Carton Quantity
			Length	Width	Height	
AK34POSTGREY	34" Grey Epoxy Shelf Post	Grey	1-1/4	1-1/4	34	4
AK39POSTGREY	39" Grey Epoxy Shelf Post	Grey	1-1/4	1-1/4	39	4
AK54POSTGREY	54" Grey Epoxy Shelf Post	Grey	1-1/4	1-1/4	54	4
AK63POSTGREY	63" Grey Epoxy Shelf Post	Grey	1-1/4	1-1/4	63	4
AK74POSTGREY	74" Grey Epoxy Shelf Post	Grey	1-1/4	1-1/4	74	4
AK86POSTGREY	86" Grey Epoxy Shelf Post	Grey	1-1/4	1-1/4	86	4
AK96POSTGREY	96" Grey Epoxy Shelf Post	Grey	1-1/4	1-1/4	96	4

*Other sizes, customizations and finishes available with minimum order.

Wire Shelving Accessories



Swivel Casters

- Create mobile shelving units and carts with these swivel caster sets.
- 5" casters, 2 with brakes, 2 without brakes.

"S" Hooks

- Allow for continuous runs or 90° angles.
- Use two hooks per shelf.

Post Clamps

- Secure two shelf kits together by connecting their posts with a joining bar.
- Post clamps leave a 1/2" gap between posts.

Leveling Feet

- Levels shelving units on uneven surfaces.

Steel Foot Plate

- Provides extra stability to shelving units.
- Allows shelving to be secured to the floor.

Donut Bumper

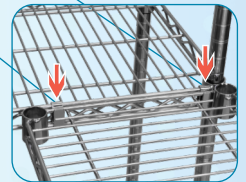
- Slides onto bottom of upright posts.
- Add to mobile units to prevent them from damaging walls.

Quick-Adjust Clips

- For assembling shelves to posts.



"S" Hooks



Post Clamp



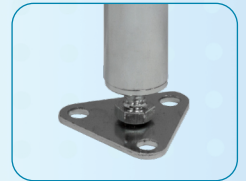
AK5CASTER2SB2S
(2) w/ brakes, (2) w/o brakes



Leveling Feet



Steel Feet
Immobilizer



Donut Bumper



Quick-Adjust Clips



Wire Shelving Accessories		
Model No.	Description	Pkg. Qty.
AKSHOOK	S-Hooks (Package of 8)	8
AKFP	Foot Plate for AK Series Posts	1
AWDONUT	3" Donut Bumper for Wire Posts	1
AK5CASTER	5" Polyurethane Casters, 2 w/ Brakes, 2 w/o Brakes	4
AKPH18	18" Push Handle	1
AKPH24	24" Push Handle	1
AWCLIP	Plastic Clip for Wire Shelf	4
AKPC	1/2" Post Clamp	1

*Other accessories, customizations and finishes available with minimum order.

Label Holders

No more climbing or bending to read or scan a label!

Angle Label Holder:

- The angle label holder snaps securely to the face of most existing wire shelving.
- It allows the label face to be adjusted upward on low shelves and downward on high shelves for easy viewing and bar code scanning.
- Perfect for 1:1 labeling used in 5S Lean initiatives.
- The clear window protects the card stock label (provided).

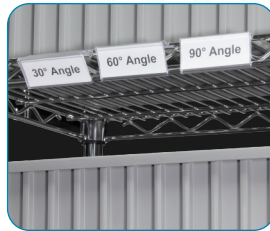
Flat Label Holder:

- The flat label holder attaches to the face of most wire shelving units.
- Perfect for 1:1 labeling used in 5S Lean initiatives.
- The clear window protects the card stock label (provided).

Standard Colours

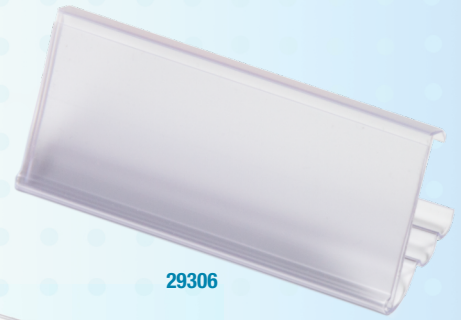


Low

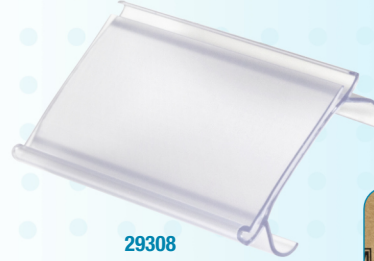


High

Shelf Label Holders								
Model Number	Description	Colours	Outside Dimensions (In.)			Other Specifications		
			Length	Width	Height	Weight (lbs)	Cards Per Pack	Package Quantity
29306	Angle Shelf Label Holder	Standard	7/8	3	1-1/4	0.02	48	25
29308	Flat Shelf Label Holder	Standard	7/8	3	1-1/4	0.02	48	25



29306



29308



29308 on wire shelving



29306 on wire shelving

Fiberglass Reinforced Containers

- Fiberglass reinforced containers nest when empty and stack when full by rotating 180°.
- Can be continuously used in temperatures ranging from -60° to 250° F (-51° to 121° C) and intermittently in temperatures 300° F and higher.
- Will not bend or sag under loads, and unlike metal, will not dent or corrode.
- Impervious to radiation, cutting oils, greases, solvents, detergents, mild acids and alkaline solutions within a pH rating of 3.0 – 10.0.
- Container can accommodate up to 500lbs.
- Optional lids and dolly available (minimum orders apply).

Standard Colours



Fiberglass Reinforced Stack and Nest Containers								
Model Number	Description	Colours	Outside Dimensions (In.)			Other Specifications		
			Length	Width	Height	Weight (lbs)	Capacity (lbs)	Carton Quantity
780208	Fiberglass Reinforced Stack and Nest	Standard	17-7/8	10-5/8	5	3.00	500.00	10
780308	Fiberglass Reinforced Stack and Nest	Standard	19-3/4	12-1/2	6	4.00	500.00	10
780408	Fiberglass Reinforced Stack and Nest	Standard	20-1/2	12-7/8	8	5.00	500.00	10
780508	Fiberglass Reinforced Stack and Nest	Standard	24-1/4	14-3/4	8	6.00	500.00	10
780608	Fiberglass Reinforced Stack and Nest	Standard	25-1/4	18	10	9.50	500.00	5
780708	Fiberglass Reinforced Stack and Nest	Standard	27-1/2	20	14-1/8	13.00	500.00	5

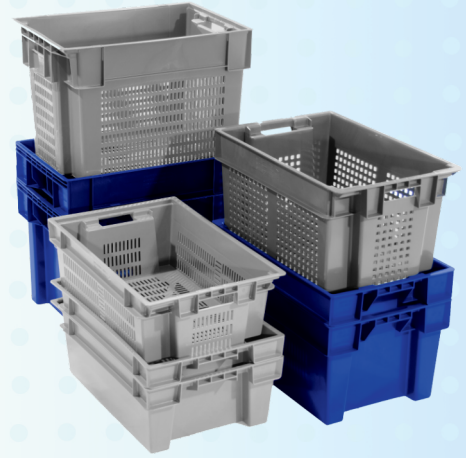
*Other colours available with minimum order.



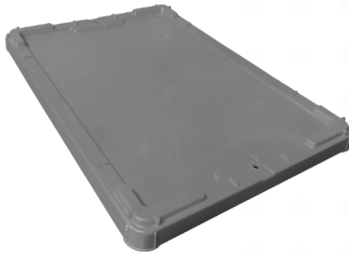
780608GREY

Stack and Nest Containers

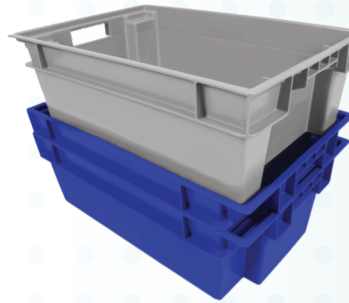
- Ideal for shipping, distribution and storage.
- Stack without lids for convenient storage and shipping.
- Totes nest when empty.
- Strong, industrial-grade polymer will not rust, corrode, or splinter.
- Long service life resulting in lower replacement costs.
- Manufactured from FDA-approved materials.
- Standard footprint, SN2416 series containers are cross compatible.
- Five per layer on a standard 48" x 40" pallet.



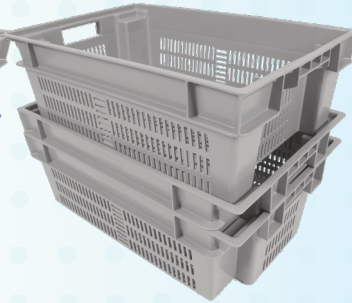
Standard Colours



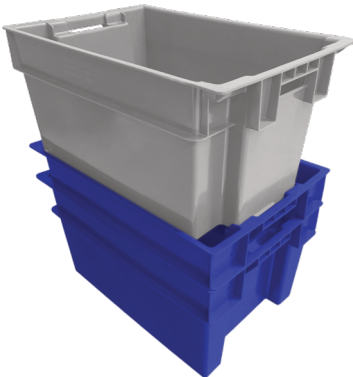
SL24160200GREY



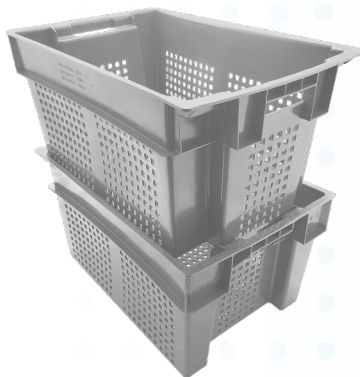
SN24160800GREY
and
SN24160800BLUE



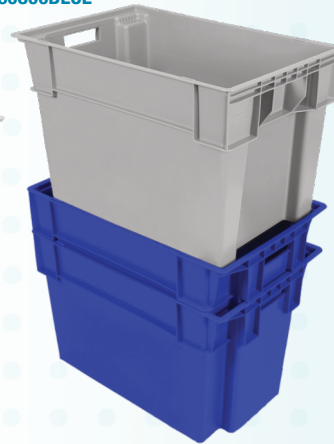
SN24160822GREY



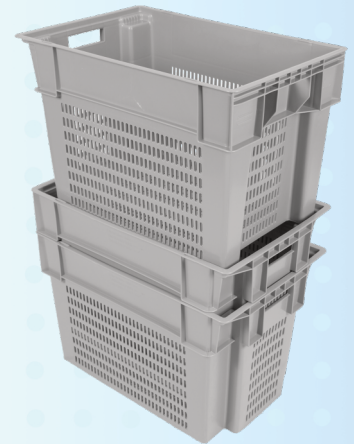
SN24161200GREY
and
SN24161200BLUE



SN24161222GREY



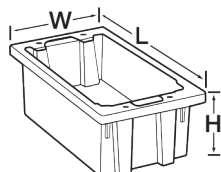
SN24161600GREY
and
SN24161600BLUE



SN24161622GREY

Stack and Nest Containers									
Model Number	Description	Colours	Outside Dimensions (In.)			Other Specifications			
			Length	Width	Height	Weight (lbs)	Capacity (lbs)	Carton Quantity	
SN24160800	24" x 16" x 8" Solid S/N Container	Standard	23-1/2	15-1/2	7-7/8	4.00	80.00	1	
SN24160822	24" x 16" x 8" Vented S/N Container	Standard	23-1/2	15-1/2	7-7/8	3.20	80.00	1	
SN24161200	24" x 16" x 12" Solid S/N Container	Standard	23-1/2	15-1/2	11-3/4	4.80	80.00	1	
SN24161222	24" x 16" x 12" Vented S/N Container	Standard	23-1/2	15-1/2	11-3/4	4.40	80.00	1	
SN24161600	24" x 16" x 16" Solid S/N Container	Standard	23-1/2	15-1/2	15-5/8	6.60	80.00	1	
SN24161622	24" x 16" x 16" Vented S/N Container	Standard	23-1/2	15-1/2	15-5/8	6.10	80.00	1	

*Other colours available with minimum order.



Stack and Nest Container Accessories									
Model Number	Description	Colours	Outside Dimensions (In.)			Other Specifications			
			Length	Width	Height	Weight (lbs)	Capacity (lbs)	Carton Quantity	
SL24160200	24" x 16" x 2", Lid for SN2416s	Standard	23-5/8	15-3/4	2	2.00	-	1	

*Other colours available with minimum order.

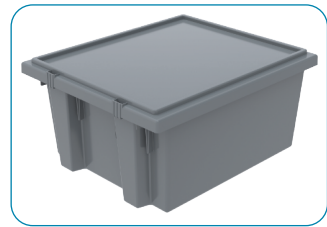
Stack and Nest Containers

- Ideal for shipping, distribution and storage.
- Stack with or without lids for convenient storage and shipping.
- Totes nest when empty.
- Strong, industrial-grade polymer will not rust, corrode, splinter, or bend out of shape.
- Long service life resulting in lower replacement costs.
- Manufactured from FDA-approved materials.
- Multiple sizes and colours available.

Standard Colours



35200



Optional lids protect contents from dust and damage



Clear plastic label holders accommodate labels up to 5" x 3-3/4"



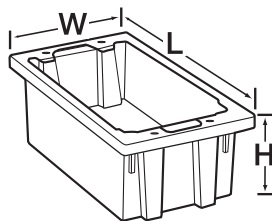
35180BLUE



35190GREY



35230RED



Stack and Nest Containers								
Model Number	Description	Colours	Outside Dimensions (In.)			Other Specifications		
			Length	Width	Height	Weight (lbs)	Capacity (lbs)	Carton Quantity
35180	18" x 11" x 6" Container	Standard	18	11	6	1.93	45.00	6
35185	18" x 11" x 9" Container	Standard	18	11	9	2.67	60.00	6
35190	19-1/2" x 15-1/2" x 10" Container	Standard	19-1/2	15-1/2	10	3.81	65.00	6
35195	19-1/2" x 15-1/2" x 13" Container	Standard	19-1/2	15-1/2	13	4.38	85.00	6
35200	19-1/2" x 13-1/2" x 8" Container	Standard	19-1/2	13-1/2	8	2.96	55.00	6
35225	23-1/2" x 19-1/2" x 10" Container	Standard	23-1/2	19-1/2	10	6.12	70.00	3
35230	23-1/2" x 19-1/2" x 13" Container	Standard	23-1/2	19-1/2	13	7.33	90.00	3
35240	23-1/2" x 15-1/2" x 12" Container	Standard	23-1/2	15-1/2	12	6.04	75.00	3
35300	29-1/2" x 19-1/2" x 15" Container	Standard	29-1/2	19-1/2	15	10.33	100.00	3

*Other colours available with minimum order. Order in carton quantities.

Stack and Nest Containers Ext.		
Model Number	Dividers	
	Lid Model	Lid Ctn. Qty.
35180	35181	6
35185	35181	6
35190	35191	6
35195	35191	6
35200	35201	6
35225	35231	3
35230	35231	3
35240	35241	3
35300	35301	3

*Other colours available with minimum order.

Stack and Nest Containers

- Ideal for shipping, distribution and storage.
- Stack without lids for convenient storage and shipping.
- Totes nest when empty.
- Strong, industrial-grade polymer will not rust, corrode, or splinter.
- Long service life resulting in lower replacement costs.
- Manufactured from FDA-approved materials.

Standard Colours



NS920BLUE



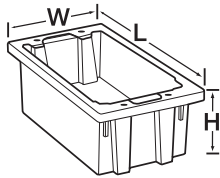
C18702GREY
and
C18702BLUE



SN20161200GREY
and
SN20161200BLUE



SN21141200GREY



Stack and Nest Containers									
			Outside Dimensions (In.)			Other Specifications			
Model Number	Description	Colours	Length	Width	Height	Weight (lbs)	Capacity (lbs)	Carton Quantity	
NS920	20" x 16" x 12" Solid S/N Container	Blue	15-1/4	15-1/4	6	2.00	45.00	1	
SN20161200	20" x 16" x 12" Solid S/N Container	Standard	19-3/4	15-7/8	11-7/8	4.80	60.00	1	
SN21141200	21" x 14" x 12" Solid S/N Container	Grey	20-7/8	13-7/8	12-1/8	4.20	70.00	1	
C18702	32" x 18" x 12" Solid S/N Container	Standard	31-1/2	18-1/4	12	8.40	125.00	1	

*Other colours available with minimum order.

Cross Stack and Nest Containers

- Ideal for shipping, distribution and storage.
- Colour code like items for easy identification.
- Stack with or without lids for convenient storage and shipping.
- Containers nest when empty.
- Strong, industrial-grade polymer will not rust, corrode, or splinter.
- Long service life resulting in lower replacement costs.
- Manufactured from FDA-approved materials.

Standard Colours



JL25160968 in Blue, Green, Grey, Red, White and Yellow

Cross Stack and Nest Containers									
			Outside Dimensions (In.)			Other Specifications			
Model Number	Description	Colours	Length	Width	Height	Weight (lbs)	Capacity (lbs)	Carton Quantity	
JL25160968	Jumbo Lug Stack and Nest Container	Standard	24-7/8	15-7/8	8-1/2	3.40	100.00	1	
LJ25160200	Lid for Jumbo Lug Containers	White	25-2/5	16-2/5	1-3/5	2.00	-	1	

*Other colours available with minimum order.

Attached Lid Containers

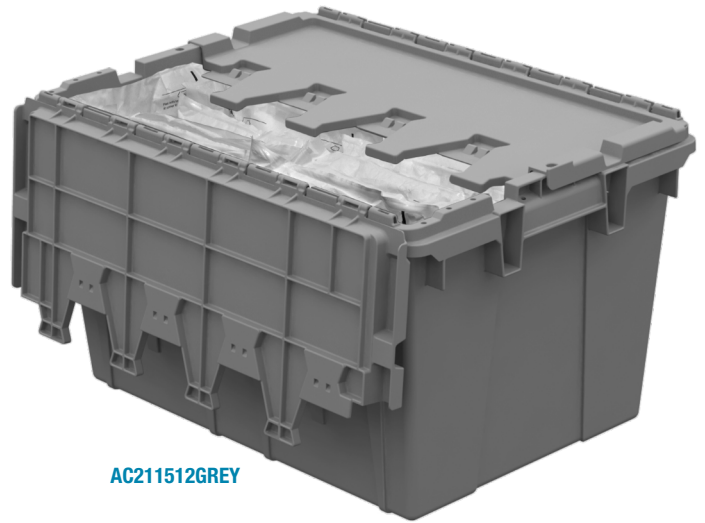
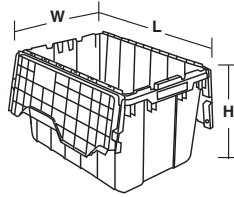
- Securely store and transport supplies.
- Smooth interior for easy cleaning.
- Stackable design, nestable when empty to save space.
- Durable lid with multiple interlocking teeth provides a durable, secure lid closure.
- Eliminate use of corrugated boxes.
- Secure with optional tote snaps, zip ties, locks and more.
- Ergonomic handles designed for easy lifting and carrying.

Standard Colours

GY



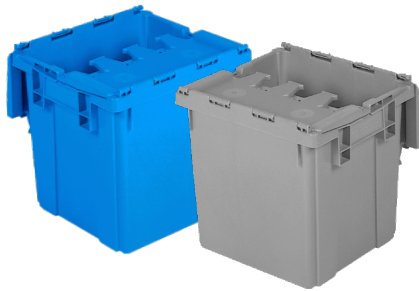
For added security during transport or storage, use tote snaps or zip-ties.



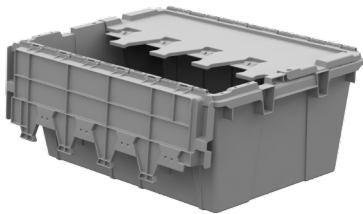
AC211512GREY



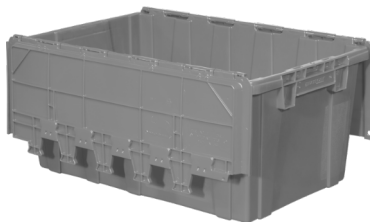
Containers nest when empty and stack on closed lids.



AR151413BLUE and AR151413GREY



AC211509GREY



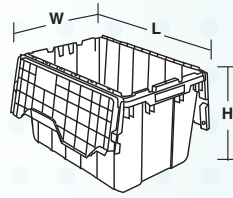
AR271712GREY

Attached Lid Containers									
Model Number	Description	Colours	Outside Dimensions (In.)			Other Specifications			
			Length	Width	Height	Weight (lbs)	Capacity (lbs)	Carton Quantity	
AR151413	15" x 14" x 13", Attached Lid Container	BL, GY	14-3/4	13-1/2	13-3/10	4.60	50.00	1	
AR151415	15" x 14" x 15", Attached Lid Container	BL, GY	14-3/4	13-1/2	15-3/10	5.20	50.00	1	
AR201207	20" x 12" x 7" Attached Lid Container	Standard	20	11-7/10	7-1/2	3.80	40.00	1	
DC201207	20" x 12" x 7" Attached Lid Container	BL, GN, GY	19-1/2	11-1/2	7-3/8	3.10	40.00	1	
AC211509	21" x 15" x 9" Attached Lid Container	Standard	21-4/5	15-1/4	9-3/8	5.20	60.00	1	
DC211509	21" x 15" x 9" Attached Lid Container	BL, GN, GY, RD	21-4/5	15-1/4	9-1/2	5.20	60.00	1	
AC211512	21" x 15" x 12" Attached Lid Container	Standard	21-4/5	15-1/4	12-1/2	5.60	60.00	1	
DC211512	21" x 15" x 12" Attached Lid Container	BL, BK, GN, GY, RD, YL	21-4/5	15-1/4	12-4/5	5.40	60.00	1	
AR211517	21" x 15" x 17" Attached Lid Container	Standard	21-4/5	15-1/4	17	6.90	60.00	1	
DC211517	21" x 15" x 17" Attached Lid Container	BL, GY	21-4/5	15-1/4	17-1/5	7.70	60.00	1	
AR242012	24" x 20" x 12" Attached Lid Container	Standard	24	19-1/2	12-1/2	8.10	80.00	1	
DC242012	24" x 20" x 12" Attached Lid Container	BL, GY	23-3/4	19-1/2	12-3/5	7.70	80.00	1	
AR271709	27" x 17" x 9", Attached Lid Container	BL, GN, GY, RD	27	16-9/10	9-5/8	7.40	80.00	1	
AR271712	27" x 17" x 12" Attached Lid Container	Standard	27	16-9/10	12-1/2	8.20	100.00	1	
DC271712	27" x 17" x 12" Attached Lid Container	BL, GN, GY, RD	27-1/4	17	12-3/4	7.70	100.00	1	
AS282115	28" x 21" x 15" Attached Lid Container	Standard	28	20-4/5	15-2/5	12.60	100.00	1	
DC282015	28" x 21" x 15" Attached Lid Container	BL, GY	28	20-4/5	15/3/5	13.20	100.00	1	
AS342015	28" x 21" x 15" Attached Lid Container	Standard	34	24	19-3/5	19.00	100.00	1	

*Other colours and sizes available with minimum order.

Clear Attached Lid Containers

- Securely store and transport supplies.
- Clear sides allow visibility of contents.
- Smooth interior for easy cleaning.
- Stackable design, nestable when empty to save space.
- Ideal for light to medium duty storage.
- Secure with optional tote snaps, zip ties, locks and more.
- Hanging file attached lid container has metal rails for hanging letter size folders.



Standard Colours

CL



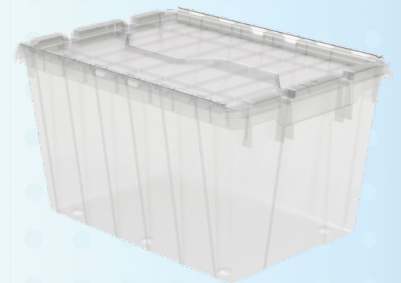
66497CLDGN



66486FILEB



66486CLDBL



39120SCLAR



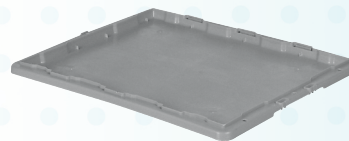
66486CLDBL

Clear Attached Lid Containers								
			Outside Dimensions (In.)			Other Specifications		
Model Number	Description	Colours	Length	Width	Height	Weight (lbs)	Capacity (lbs)	Carton Quantity
66486CLDBL	KeepBox Attached Lid Container	Clear/Blue	21-1/2	15	12-1/2	4.60	25.00	6
66486FILEB	Attached Lid Container w/ File Rails	Clear/Blue	21-1/2	15	12-1/2	5.20	25.00	6
66497CLDGN	KeepBox Attached Lid Container	Clear/Green	21-1/2	15	17	3.80	35.00	3
39120	Attached Lid Container	Clear	21-4/5	15-1/2	12-1/2	7.05	65.00	1

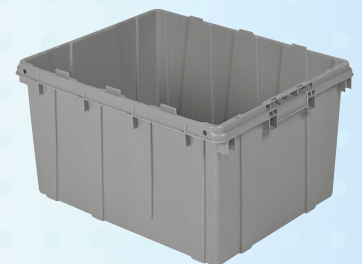
*Other colours available with minimum order.

Detached Lid Containers

- Ergonomic handles provide durable and comfortable grips for easy lifting and carrying.
- Large surface area for labeling.
- Containers stack firmly with lids, nest when empty for optimum space utilization.
- Detached lids snap tight for secure closure.
- Secure with optional tote snaps, zip ties, locks and more.
- Smooth interior for easy cleaning.



DR24200100



DL24201202

Standard Colours

GY

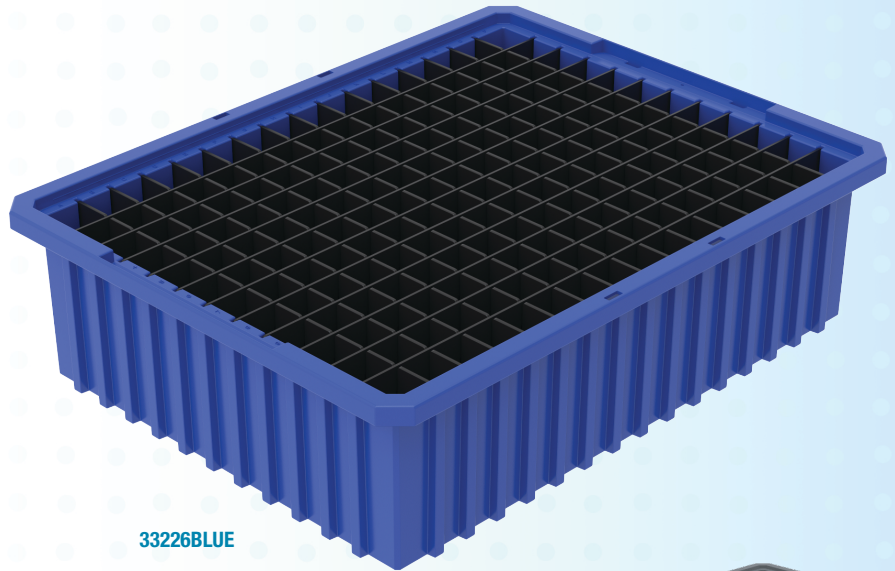
Detached Lid Containers								
			Outside Dimensions (In.)			Other Specifications		
Model Number	Description	Colours	Length	Width	Height	Weight (lbs)	Capacity (lbs)	Carton Quantity
DL21150902	21" x 15" x 9", Detached Lid Container	Standard	21-4/5	15-1/4	9-3/8	3.40	60.00	1
DL24201202	24" x 20" x 12", Detached Lid Container	Standard	24	19-1/2	12-1/2	5.50	100.00	1
DR21150100	Lid for DL2115 Detached Lid Containers	Standard	21-4/5	15-1/4	1-1/8	1.60	-	1
DR24200100	Lid for DL2420 Detached Lid Containers	Standard	24	19-1/2	1-1/8	2.00	-	1

*Other colours available with minimum order.

Grid Containers

- Create custom sized compartments using optional lengthwise and crosswise dividers.
- Great for organizing items and creating kits of items that are frequently used together.
- Multiple colours available for colour coding and easy identification, also available in clear (minimum order quantities apply).
- Same footprint models are stackable.

Standard Colours



33226BLUE



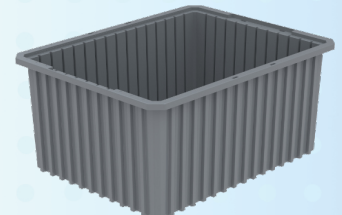
33165BLUE



33220BLUE



33222GREY



33224RED

Grid Containers								
Model Number	Description	Colours	Outside Dimensions (In.)			Other Specifications		
			Length	Width	Height	Weight (lbs)	Capacity (lbs)	Carton Quantity
33105	10-7/8" x 8-1/4" x 5" Grid Container	Standard	10-7/8	8-1/4	5	1.05	25.00	20
33162	16-1/2" x 10-7/8" x 2" Grid Container	Red	16-1/2	10-7/8	2-1/2	1.09	20.00	12
33164	16-1/2" x 10-7/8" x 4" Grid Container	Standard	16-1/2	10-7/8	4	1.58	20.00	12
33165	16-1/2" x 10-7/8" x 5" Grid Container	Red	16-1/2	10-7/8	5	1.65	35.00	12
33166	16-1/2" x 10-7/8" x 6" Grid Container	Standard	16-1/2	10-7/8	6	2.38	35.00	8
33168	16-1/2" x 10-7/8" x 8" Grid Container	Standard	16-1/2	10-7/8	8	3.00	40.00	6
33220	22-3/8" x 17-3/8" x 10" Grid Container	Standard	22-3/8	17-3/8	10	6.50	50.00	2
33222	22-1/2" x 17-3/8" x 12" Grid Container	Standard	22-1/2	17-1/2	12	6.40	60.00	3
33223	22-1/2" x 17-3/8" x 3" Grid Container	Standard	22-1/2	17-3/8	3	2.83	30.00	6
33224	22-3/8" x 17-3/8" x 4" Grid Container	Standard	22-3/8	17-3/8	4	3.44	30.00	6
33226	22-3/8" x 17-3/8" x 6" Grid Container	Standard	22-3/8	17-3/8	6	4.76	40.00	4
33228	22-3/8" x 17-3/8" x 8" Grid Container	Standard	22-3/8	17-3/8	8	6.00	50.00	3

*Other colours available with minimum order. Order in carton quantities.

Grid Containers Ext.				
Model Number	Length Dividers*	Divider Pkg. Qty	Dividers	
			Width Dividers*	Divider Pkg. Qty
33105	42105 (5)	6	41105 (7)	6
33162	42162 (7)	6	41162 (11)	6
33164	42164 (7)	6	41164 (11)	6
33165	42165 (7)	6	41165 (11)	6
33166	42166 (7)	6	41166 (11)	6
33168	42168 (7)	6	41168 (11)	6
33220	42220 (11)	6	41220 (15)	6
33222	42222 (11)	6	41222 (15)	6
33223	42223 (11)	6	41223 (15)	6
33224	42224 (11)	6	41224 (15)	6
33226	42226 (11)	6	41226 (15)	6
33228	42228 (11)	6	41228 (15)	6

* () = Max # of divider slots per bin. Dividers sold separately.



Clear snap-on lids keep contents clean and stack securely



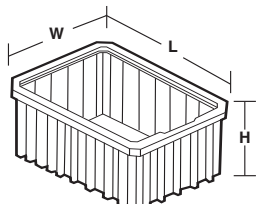
Molded-in letter/number system for easy tracking



Dividers allow for the subdivision of containers



Clear plastic label holders snap on any side of the container



Label Holders		
Model No.	Fits Grid No.	Pkg. Qty.
35010	Fits all except 33164, 33223, 33224	6

Clear Snap-On Lids		
Model No.	Fits Grid No.	Ctn. Qty.
33011	33105	10
33061	33164, 33166, 33168	4
33023	33220, 33222, 33223, 33224, 33226, 33228	3

ProCart™

- Box cart or flat top, all in one!
- Versatile, all-purpose plastic utility cart.
- Quickly move supplies through your facility.
- Deep, molded-in compartments near the handle keep small items/supplies in reach.
- Bins, modular cabinets, tilt out bins and steel storage cabinets can be mounted under cart using a rail system (not included).
- Dent-resistant, rust-proof, never needs painting.
- Large ProCart included molded in cup holder.

Standard Colours

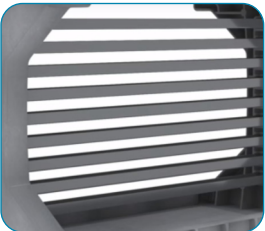
GY



I-Beam post makes it easy to load and unload boxes on the lower shelf



Hinged side gates on both shelves flip up or down to convert the ProCart to a flat-top or box-top cart



Optional rails utilize extra space with hanging and stacking bins, bin cabinets and tilt view storage bins.



30936



30936, 30234GREEN plus 30906



30936, 19909, 30224 plus 30906



ProCart Mobile Carts								
Model Number	Description	Colours	Outside Dimensions (In.)			Other Specifications		
			Length	Width	Height	Weight (lbs)	Capacity (lbs)	Carton Quantity
30930	Small ProCart Structural Foam Cart	Standard	45-5/8	24	34-3/4	51.00	400.00	1
30936	Large ProCart Structural Foam Cart	Standard	41-1/2	19	34-3/4	62.00	400.00	1
30900	9-Rail System for 30930 ProCart	Standard	—	—	—	20.70	10.00	1
30906	9-Rail System for 30936 ProCart	Standard	—	—	—	22.50	15.00	1

Linen, Recycling, and Waste Disposal Carts

- Thick, rugged tub walls for added durability and resistance to impact.
- Seamless bodies will not crack, chip, fade, rust, dent, splinter or corrode.
- Ergonomically designed for safe and easy loading and unloading.
- Light-duty, Medium-duty and heavy-duty styles available.
- Optional spring platforms make material handling easier and safer by eliminating excess bending.
- Optional lids protect content and reduces dust build up.



TS145B cart with 145SPRING platform

PLATFORM LOWERS WITH WEIGHT AND RAISES AUTOMATICALLY WHEN WEIGHT IS REMOVED

Standard Colours



Mini Carts								
			Outside Dimensions (In.)			Other Specifications		
Model Number	Description	Colours	Length	Width	Height	Weight (lbs)	Capacity (lbs)	Caster Pattern
TS105A	33" x 19" x 28", 3" Mini Cart	Standard	33	19	28	25.00	200.00	Corner
TS110A	35" x 25" x 25", 3" Mini Cart	Standard	35	25	24	30.00	300.00	Corner
TS115A	48" x 19" x 28", 3" Mini Cart	Standard	48	19	28	40.00	300.00	Corner

*Other colours, sizes and customizations available upon request (minimum orders apply).



TS105A



TS125EC

TS125A

Regular-Duty Carts								
			Outside Dimensions (In.)			Other Specifications		
Model Number	Description	Colours	Length	Width	Height	Weight (lbs)	Capacity (lbs)	Caster Pattern
TS125EC	Light-Duty, 100% Recycled Cart	Black	39	27	29	30.00	200.00	Corner
TS125A	39" x 27" x 30", 3" Cart	Standard	39	27	30	40.00	400.00	Diamond
TS135A	41" x 29" x 31", 3" Cart	Standard	41	29	31	45.00	400.00	Diamond
TS145A	43" x 31" x 33", 3" Cart	Standard	43	31	33	50.00	400.00	Diamond

*Other colours, sizes and customizations available upon request (minimum orders apply).



TS145B
Corner Caster

Heavy-Duty Carts								
			Outside Dimensions (In.)			Other Specifications		
Model Number	Description	Colours	Length	Width	Height	Weight (lbs)	Capacity (lbs)	Caster Pattern
TS125B	39" x 27" x 31" Heavy-Duty Cart	Standard	39	27	31	50.00	800.00	Choose
TS135B	41" x 29" x 32" Heavy-Duty Cart	Standard	43	31	33	55.00	800.00	Choose
TS145B	43" x 31" x 34" Heavy-Duty Cart	Standard	43	31	34	60.00	800.00	Choose
TS155B	43" x 31" x 36" Heavy-Duty Cart	Standard	43	31	36	65.00	800.00	Choose

*Other colours, sizes and customizations available upon request (minimum orders apply). Specify caster pattern upon order.



Corner Caster

Diamond Caster

Optional Cart Accessories	
Model No.	Description
TS125L	Lid for 125EC, 125A, 125B Carts
TS145L	Lid for 145A, 145B, 155B Carts
TS125SPRING	Spring platform for 125 Series Carts
TS145SPRING	Spring platform for 135, 145, 150, and 155 Series Carts

*Other colours, sizes and customizations available upon request (minimum orders apply).

Easy Access Carts

- Thick, rugged tub walls for added durability and resistance to impact.
- Seamless bodies will not crack, chip, fade, rust, dent, splinter or corrode.
- Reduce stress and strain on lower back with easy access cut out.
- Optional spring platforms make material handling easier and safer by eliminating excess bending.

Standard Colours

GY



TS150B

EASY ACCESS TO REMOVE CONTENTS EASILY



Easy Access Carts								
			Outside Dimensions (In.)			Other Specifications		
Model Number	Description	Colours	Length	Width	Height	Weight (lbs)	Capacity (lbs)	Caster Pattern
TS150B	43" x 31" x 36" Easy Access Cart	Standard	43	31	36	52.00	800.00	Choose
TS165B	46" x 31" x 39" Easy Access Cart	Standard	46	31	39	75.00	900.00	Choose
TS175B	46" x 31" x 49" Easy Access Cart	Standard	46	31	49	85.00	900.00	Choose
TS185B	63" x 31" x 39" Easy Access Cart	Standard	63	31	39	100.00	900.00	Choose

*Other colours, sizes and customizations available upon request (minimum orders apply). Specify caster pattern upon order.

Next Generation Utility Cart

- Double wall box-style lip for extra durability and impact resistance.
- Better roll-ability and maneuverability with the pairing of two heavy duty casters up front and two poly-core wheels in the rear.
- Seamless bodies will not crack, chip, fade, rust, dent, splinter or corrode.
- Steel undercarriage for added strength.
- Ergonomic molded in handles for comfortable handling.

Standard Colours

BL



TS730B GREY

DOUBLE WALL COLLAR



TS770B BLUE

Next Generation Utility Cart								
			Outside Dimensions (In.)			Other Specifications		
Model Number	Description	Colours	Length	Width	Height	Weight (lbs)	Capacity (lbs)	Caster Pattern
TS730B	48" x 31" x 34.5" Next Gen Cart	Standard	48	31	34-1/2	80.00	1000.00	Corner
TS750B	60" x 31.5" x 35.5" Next Gen Cart	Standard	60	31-1/2	35-1/2	100.00	1000.00	Corner
TS770B	72" x 35.5" x 40" Next Gen Cart	Standard	72	35-1/2	40	130.00	1000.00	Corner

*Other colours, sizes and customizations available upon request (minimum orders apply).

Tilt Trucks

- Thick, rugged tub walls for added durability and resistance to impact.
- Seamless bodies will not rust, dent or need painting.
- “C” Series tilt trucks come with a unique molded boxed collar which strengthens much better than a steel frame.
- Wheel base and heavy-duty caster combination provides easy maneuverability even with heavy loads.
- Optional lids available for select models.

Note: Some tilt trucks are very large. Please measure doorways tilt trucks may travel through.

Standard Colours

GY

**100% RECYCLED
PLASTIC OPTION**



TS420EC

Economy Tilt Trucks							
Model Number	Description	Colours	Outside Dimensions (In.)			Other Specifications	
			Length	Width	Height	Weight (lbs)	Capacity (lbs)
TS420EC	Light-Duty Tilt Truck, 100% Recycled	Black	55	28	38	50.00	300.00



TS441LT

Regular-Duty Tilt Trucks							
Model Number	Description	Colours	Outside Dimensions (In.)			Other Specifications	
			Length	Width	Height	Weight (lbs)	Capacity (lbs)
TS420LT	Regular-Duty Tilt Truck	Standard	55	28	38	70.00	400.00
TS441LT	Regular-Duty Tilt Truck	Standard	63	35	40	85.00	500.00

*Other colours, sizes and customizations available upon request (minimum orders apply).

Heavy-Duty Tilt Trucks							
Model Number	Description	Colours	Outside Dimensions (In.)			Other Specifications	
			Length	Width	Height	Weight (lbs)	Capacity (lbs)
TS420C	Heavy-Duty Tilt Truck	Standard	58	29	38	85.00	1000.00
TS441C	Heavy-Duty Tilt Truck	Standard	68	36	42	100.00	1200.00

*Other colours, sizes and customizations available upon request (minimum orders apply).



TS420C

Bullseye Duo and Trio Containers

- Waste and recycling combined in one convenient station.
- Duo comes with two plastic liners, and Trio comes with 3 liners.
- A variety of labels are included with every unit.
- Lockable for extra security.
- Stainless steel hinges.

Standard Colours

SA



TS565SANDSTONE



TS575SANDSTONE



Bullseye Recycling Containers									
			Outside Dimensions (In.)			Other Specifications			
Model Number	Description	Colours	Length	Width	Height	Weight (lbs)	Capacity (L)	Lid Style	
TS565	36" x 19" x 38" Duo Bullseye	Standard	36	19	38	50.00	82 x 2	Mixed	
TS575	54" x 19" x 38" Trio Bullseye	Standard	54	19	38	90.00	82 x 3	Mixed	

*Other colours and customizations available with minimum order.

Desk and Curbside Recycling Containers

- Under table and counter recycling containers are suitable for cans, bottles, and paper recycling.
- Ergonomic handle.
- Nest when empty to maximize storage space.
- 075611 is cross stack compatible.

Standard Colours

BL



075618MBBLUE



075611MBBLUE

Desk and Curbside Recycling Containers									
			Outside Dimensions (In.)			Other Specifications			
Model Number	Description	Colours	Length	Width	Height	Weight (lbs)	Capacity (lbs)	Carton Quantity	
075611	Medium Blue Bin with Drain Holes	Standard	20-7/8	15-3/4	12	3.80	40.00	1	
075618	Large Blue Bin with Drain Holes	Standard	25-3/8	17-1/8	13-3/8	4.60	50.00	1	

*Other colours and customizations available with minimum order.

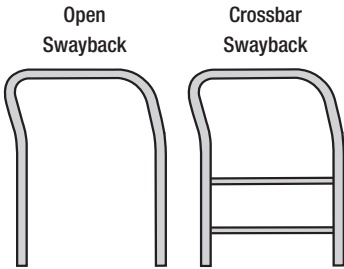
Versatile Platform Trucks

Versatile Structural Foam Platform Deck Truck

- Ideal for heavy-duty jobs with up to 2,000 lb. capacity.
- Non-skid structural foam deck is easy-to-clean and won't rot, chip or rust.
- Handles and rails feature a durable, powder-coated finish.
- Customize to your exact needs with multiple size and caster options.

Standard Colours

BK



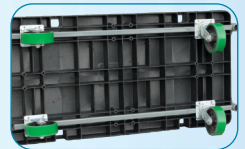
R90182A1411



Four molded-in tie-down slots for securing items during transport



Steel outside deck handle pockets are welded to under deck reinforcements. Jam bolts, standard on all models, hold handles in place



Under deck steel reinforcements and bolt-on casters provide durability and a weight capacity of up to 2,000 lbs.

Versatile Platform Deck Trucks								
			Outside Dimensions (In.)			Other Specifications		
Model Number	Description	Colours	Length	Width	Height	Weight (lbs)	Capacity (lbs)	Carton Quantity
R90182A1411	24" x 48" Open Handle Platform Deck	Standard	48	24	12-1/4	75.00	2000.00	1
R90182A1412	24" x 48" Crossbar Handle Platform Deck	Standard	48	24	12-1/4	77.00	2000.00	1
R90282A1011	30" x 60" Open Handle Platform Deck	Standard	60	30	12-1/4	88.00	2000.00	1
R90282A1012	30" x 60" Crossbar Handle Platform Deck	Standard	60	30	12-1/4	91.00	2000.00	1

*Ships in carton unassembled.

Fire Safety Storage

- All sizes are FM Approved.
- Sturdy all welded double wall steel construction.
- Durable, rust and acid resistant safety yellow powder coat.
- Meets OSHA, and NFPA code 30 standards.
- Doors are double walled.
- Flammable danger/warnings on door.
- Self close door and manual close door options available.

Standard Colours

YL



BM60-YP Closed



BM60-YP Opened

Safety Flammable Cabinets								
			Outside Dimensions (In.)			Other Specifications		
Model Number	Description	Colours	Depth	Width	Height	Weight (lbs)	Capacity (Gal)	Shelves
BM45-YP	45 Gal. Manual Close Safety Cabinet	Standard	18	43	65	345.00	45.00	2
BM60-YP	60 Gal. Manual Close Safety Cabinet	Standard	34	34	65	399.00	60.00	2
BM90-YP	90 Gal. Manual Close Safety Cabinet	Standard	34	43	65	461.00	90.00	2
BS44-YP	44 Gal. Self Close Safety Cabinet	Standard	18	34	65	312.00	44.00	3
BS60-YP	60 Gal. Self Close Safety Cabinet	Standard	34	34	65	407.00	60.00	2

*Other sizes and styles available upon request with minimum order.



www.ak-westinc.com

Phone: (403) 279-8940
Fax: (403) 225-1696
Toll Free: 1-877-979-8940